



The Hong Kong STD/AIDS update is a composite report on HIV/AIDS reporting and STI caseload statistics published three monthly. The current issue has the updated information up to December 2022.

SPP Surveillance Team:

Dr. Annie LO

Ms. Shirry WAN

Correspondence to:

Special Preventive Programme,

Centre for Health Protection, Department of Health

c/o Red Ribbon Centre, 2/F Wang Tau Hom Jockey Club Clinic,

200 Junction Road East, Kowloon, Hong Kong

Telephone: (852) 3143 7200 Facsimile: (852) 2338 0534

E-mail: aids@dh.gov.hk

List of Tables / Figures

1. NUMBER OF HIV/AIDS REPORTED	139
TABLE 1.1 SUMMARY TABLE ON THE REPORTED NUMBER OF HIV/AIDS	139
CHART 1.1 NUMBER OF HIV/AIDS REPORTED	142
2. GENDER DISTRIBUTION OF REPORTED HIV/AIDS	143
TABLE 2.1 GENDER DISTRIBUTION OF REPORTED HIV	143
CHART 2.1 GENDER DISTRIBUTION OF REPORTED HIV BY QUARTER	144
CHART 2.2 GENDER DISTRIBUTION OF REPORTED HIV BY YEAR	145
TABLE 2.2 GENDER DISTRIBUTION OF REPORTED AIDS	146
CHART 2.3 GENDER DISTRIBUTION OF REPORTED AIDS BY QUARTER	147
CHART 2.4 GENDER DISTRIBUTION OF REPORTED AIDS BY YEAR	148
3. ETHNICITY OF REPORTED HIV/AIDS	149
TABLE 3.1 DISTRIBUTION OF ETHNICITY OF REPORTED HIV	149
CHART 3.1 DISTRIBUTION OF ETHNICITY OF REPORTED HIV	150
TABLE 3.2 DISTRIBUTION OF ETHNICITY OF REPORTED AIDS	151
CHART 3.2 DISTRIBUTION OF ETHNICITY OF REPORTED AIDS	152
4. AGE DISTRIBUTION OF REPORTED HIV/AIDS	153
TABLE 4.1 AGE DISTRIBUTION OF REPORTED HIV	153
CHART 4.1 AGE DISTRIBUTION OF REPORTED HIV	154
CHART 4.2 AGE GROUP & GENDER OF TOTAL REPORTED HIV	155
TABLE 4.2 AGE DISTRIBUTION OF REPORTED AIDS	156
CHART 4.3 AGE DISTRIBUTION OF REPORTED AIDS	157
CHART 4.4 AGE GROUP & GENDER OF TOTAL REPORTED AIDS	158
5. EXPOSURE CATEGORIES OF REPORTED HIV/AIDS	159
TABLE 5.1 EXPOSURE CATEGORIES OF REPORTED HIV	159
CHART 5.1 EXPOSURE CATEGORIES OF REPORTED HIV	160
TABLE 5.2 EXPOSURE CATEGORIES OF REPORTED AIDS	161
CHART 5.2 EXPOSURE CATEGORIES OF REPORTED AIDS	162

6. RATIO (HETEROSEXUAL : HOMOSEXUAL / BISEXUAL) OF SEXUALLY ACQUIRED HIV INFECTION IN MEN	163
TABLE 6.1 RATIO OF SEXUALLY ACQUIRED INFECTION IN MEN WITH REPORTED HIV/AIDS (HETEROSEXUAL : HOMO / BISEXUAL) BY QUARTER	163
TABLE 6.2 RATIO OF SEXUALLY ACQUIRED INFECTION IN MEN WITH REPORTED HIV/AIDS (HETEROSEXUAL : HOMO / BISEXUAL) BY YEAR	164
7. INJECTING DRUG USERS IN REPORTED HIV/AIDS	165
TABLE 7.1 INJECTING DRUG USERS IN REPORTED HIV/AIDS	165
TABLE 7.2 NUMBER OF INJECTING DRUG USER IN REPORTED HIV/AIDS BY YEAR	166
8. SOURCE OF REFERRAL OF REPORTED HIV/AIDS	167
TABLE 8.1 SOURCE OF REFERRAL OF REPORTED HIV	167
CHART 8.1 SOURCE OF REFERRAL OF REPORTED HIV	168
TABLE 8.2 SOURCE OF REFERRAL OF REPORTED AIDS	169
CHART 8.2 SOURCE OF REFERRAL OF REPORTED AIDS	170
9. DISTRIBUTION OF AIDS DEFINING ILLNESSES	171
TABLE 9.1 DISTRIBUTION OF AIDS DEFINING ILLNESS OF REPORTED AIDS	171
CHART 9.1 AIDS DEFINING ILLNESS OF TOTAL REPORTED AIDS	172
CHART 9.2 AIDS DEFINING ILLNESS OF REPORTED AIDS BY YEAR	173
10. REPORTED SEXUALLY TRANSMITTED INFECTIONS (STIS) DIAGNOSED IN SOCIAL HYGIENE SERVICE	174
TABLE 10.1 SUMMARY TABLE ON THE REPORTED STIS DIAGNOSED IN SOCIAL HYGIENE SERVICE	174
11. GENDER DISTRIBUTION OF REPORTED STIS	176
TABLE 11.1 GENDER DISTRIBUTION OF SELECTED STI REPORTED BY SOCIAL HYGIENE SERVICE	176
TABLE 11.2 GENDER DISTRIBUTION OF REPORTED STI BY CLINIC	178
12. CLINIC DISTRIBUTION	179
CHART 12.1 NUMBER OF NEWLY REPORT STI IN Q4 2022 BY CLINIC (MALE CLIENTS)	179
CHART 12.2 NUMBER OF NEWLY REPORT STI IN Q4 2022 BY CLINIC (FEMALE CLIENTS)	180

1. Number of HIV/AIDS reported

Table 1.1 Summary table on the reported number of HIV/AIDS

	This quarter (Oct - Dec 2022)		Last quarter (Jul - Sep 2022)		Same quarter last year (Oct - Dec 2021)		Cumulative (1984 – 2022)	
	HIV	AIDS	HIV	AIDS	HIV	AIDS	HIV	AIDS
Sex								
Male	85	7	80	9	86	19	9,541	1,971
Female	17	2	17	3	24	4	2,100	411
Ethnicity / race								
Chinese	68	7	61	9	69	16	8,099	1,837
Non-Chinese	16	2	17	3	22	7	3,150	545
<i>Asian</i>	10	2	10	3	12	5	1,632	387
<i>White</i>	1	0	3	0	6	2	658	104
<i>Black</i>	5	0	2	0	2	0	274	45
<i>Others</i>	0	0	2	0	2	0	586	9
Unknown	18	0	19	0	19	0	392	0

(to be cont'd)

Table 1.1 (cont'd)

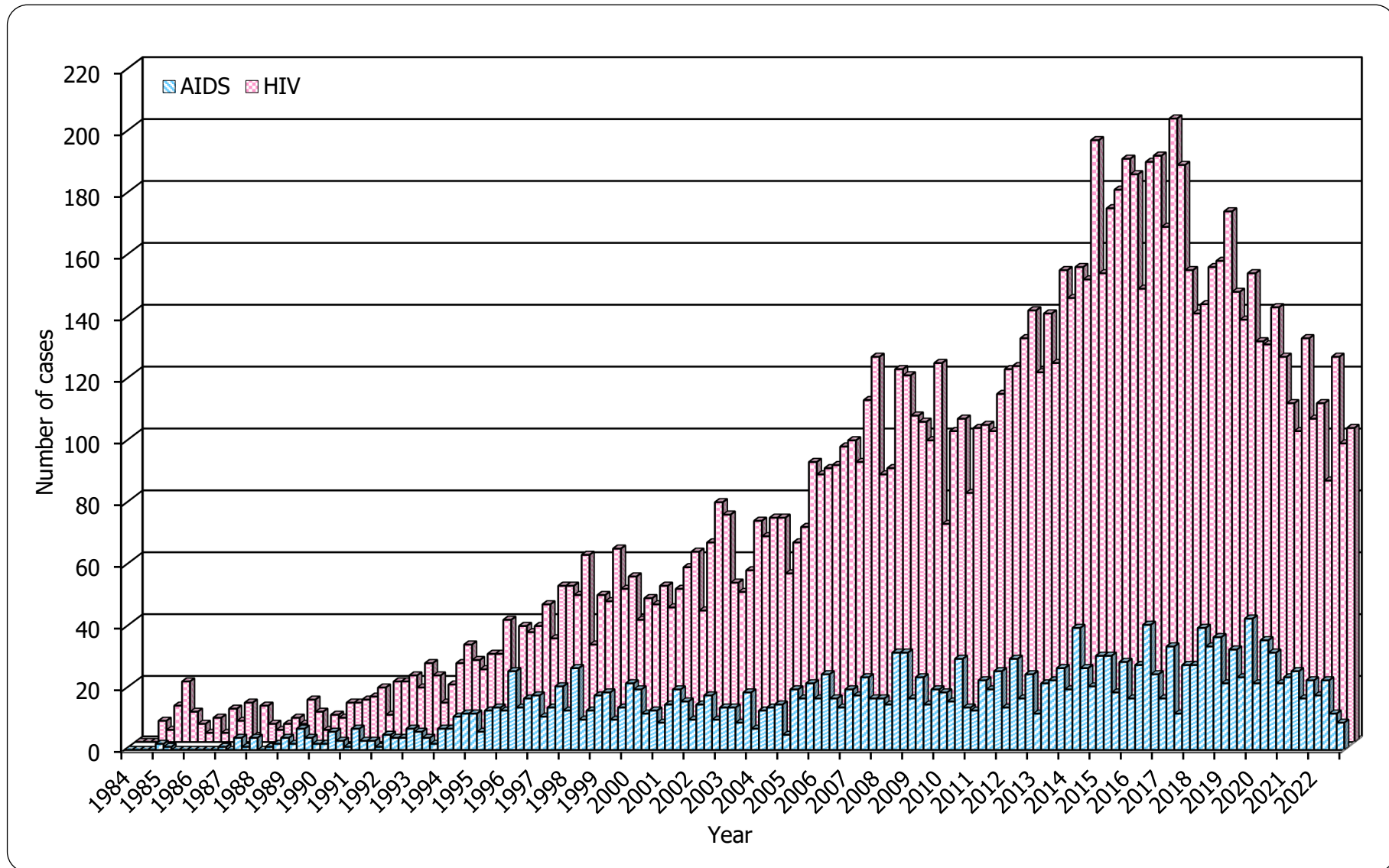
	This quarter (Oct - Dec 2022)		Last quarter (Jul - Sep 2022)		Same quarter last year (Oct - Dec 2021)		Cumulative (1984 – 2022)	
	HIV	AIDS	HIV	AIDS	HIV	AIDS	HIV	AIDS
Age at diagnosis								
Adult	102	9	97	12	110	23	11,586	2,368
Child (age 13 or less)	0	0	0	0	0	0	55	14
Exposure category								
Heterosexual	30	4	28	7	35	11	3,741	1,202
Homosexual	39	4	39	4	39	7	4,850	752
Bisexual	8	0	7	0	13	5	686	164
Injecting drug use	0	0	2	0	0	0	375	68
Blood / blood product infusion	0	0	0	0	0	0	86	26
Perinatal	0	0	0	0	0	0	35	11
Undetermined	25	1	21	1	23	0	1,868	159

(to be cont'd)

Table 1.1 (cont'd)

	This quarter (Oct - Dec 2022)		Last quarter (Jul - Sep 2022)		Same quarter last year (Oct - Dec 2021)		Cumulative (1984 – 2022)	
	HIV	AIDS	HIV	AIDS	HIV	AIDS	HIV	AIDS
Source of referral								
Public hospitals / clinics / laboratories	50	9	39	8	51	18	4,820	1,844
Private hospitals / clinics / laboratories	7	0	13	1	18	1	2,204	300
Social Hygiene Clinics	15	0	18	2	14	0	1,700	81
DH AIDS Unit	13	0	14	1	19	2	1,470	120
AIDS service organisations (NGOs)	16	0	11	0	7	1	1,131	20
Hong Kong Red Cross Blood Transfusion Service	1	0	1	0	1	0	180	10
Drug rehabilitation services	0	0	1	0	0	1	136	7
Total	102	9	97	12	110	23	11,641	2,382

Chart 1.1 Number of HIV/AIDS reported



2. Gender distribution of reported HIV/AIDS

Table 2.1 Gender distribution of reported HIV

	This quarter (Oct - Dec 2022)	Last quarter (Jul - Sep 2022)	Same quarter last year (Oct - Dec 2021)	Cumulative (1984 – 2022)
Male	85	80	86	9,541
Female	17	17	24	2,100
Total	102	97	110	11,641

Chart 2.1 Gender distribution of reported HIV by quarter

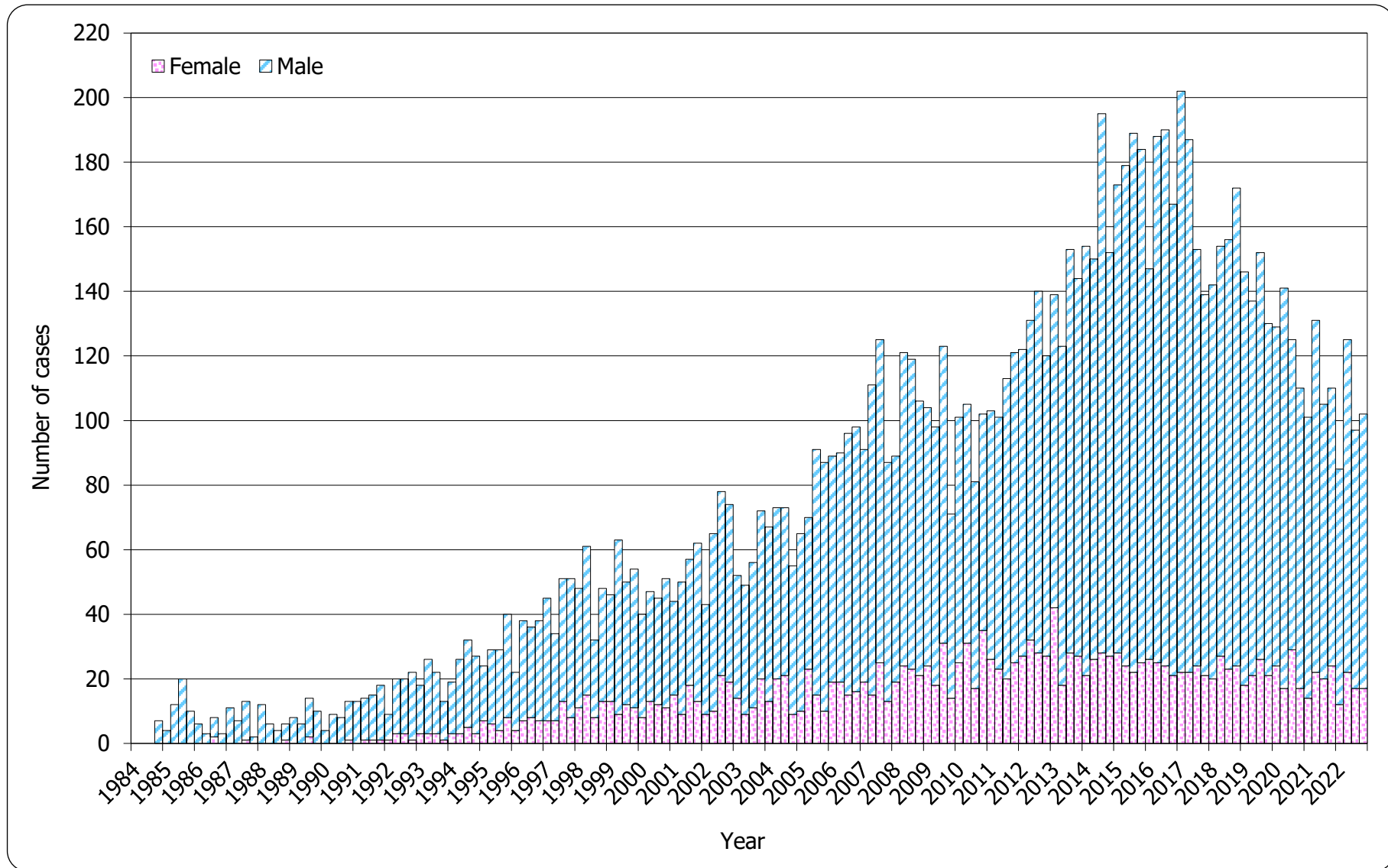


Chart 2.2 Gender distribution of reported HIV by year

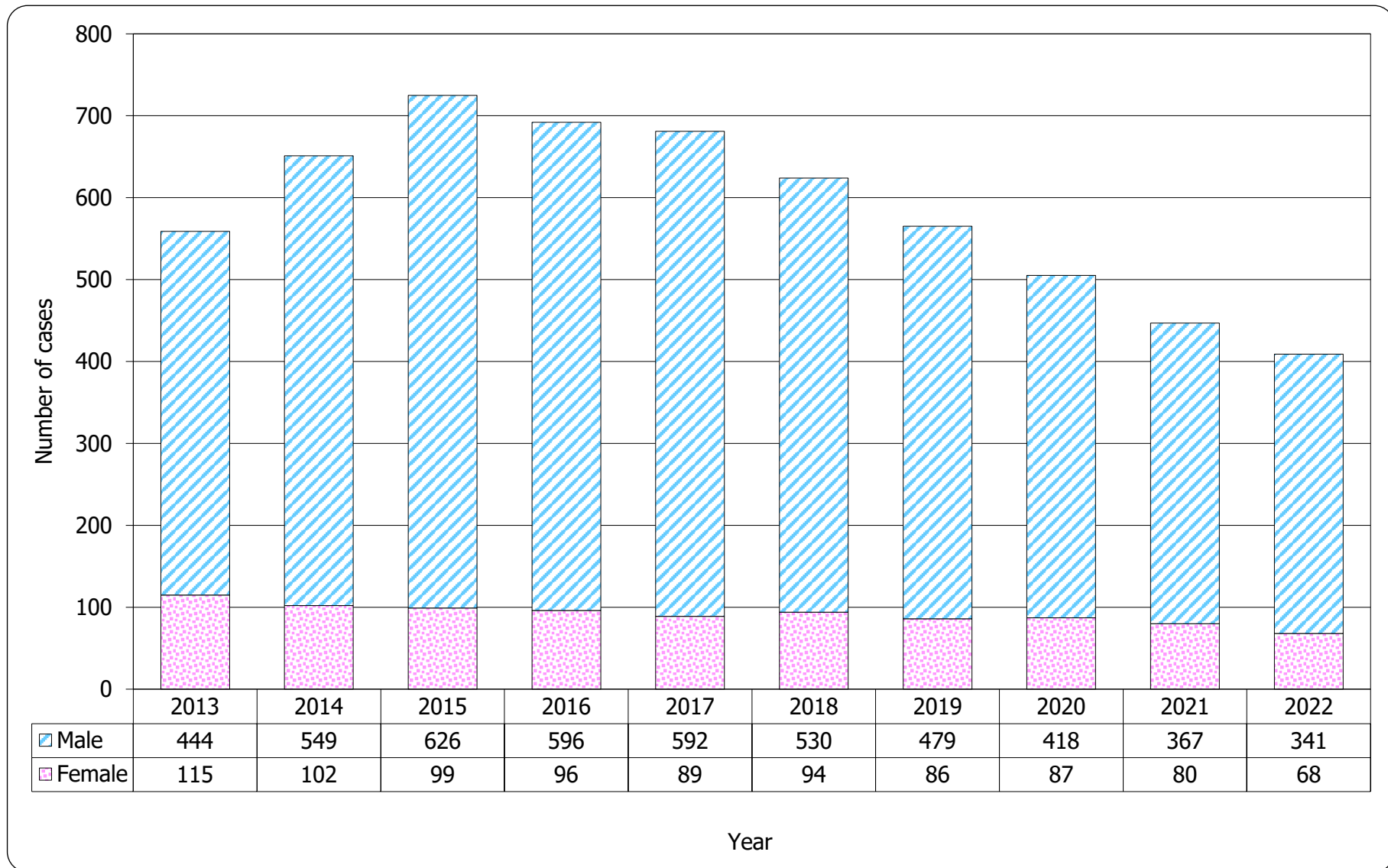


Table 2.2 Gender distribution of reported AIDS

	This quarter (Oct - Dec 2022)	Last quarter (Jul - Sep 2022)	Same quarter last year (Oct - Dec 2021)	Cumulative (1984 – 2022)
Male	7	9	19	1,971
Female	2	3	4	411
Total	9	12	23	2,382

Chart 2.3 Gender distribution of reported AIDS by quarter

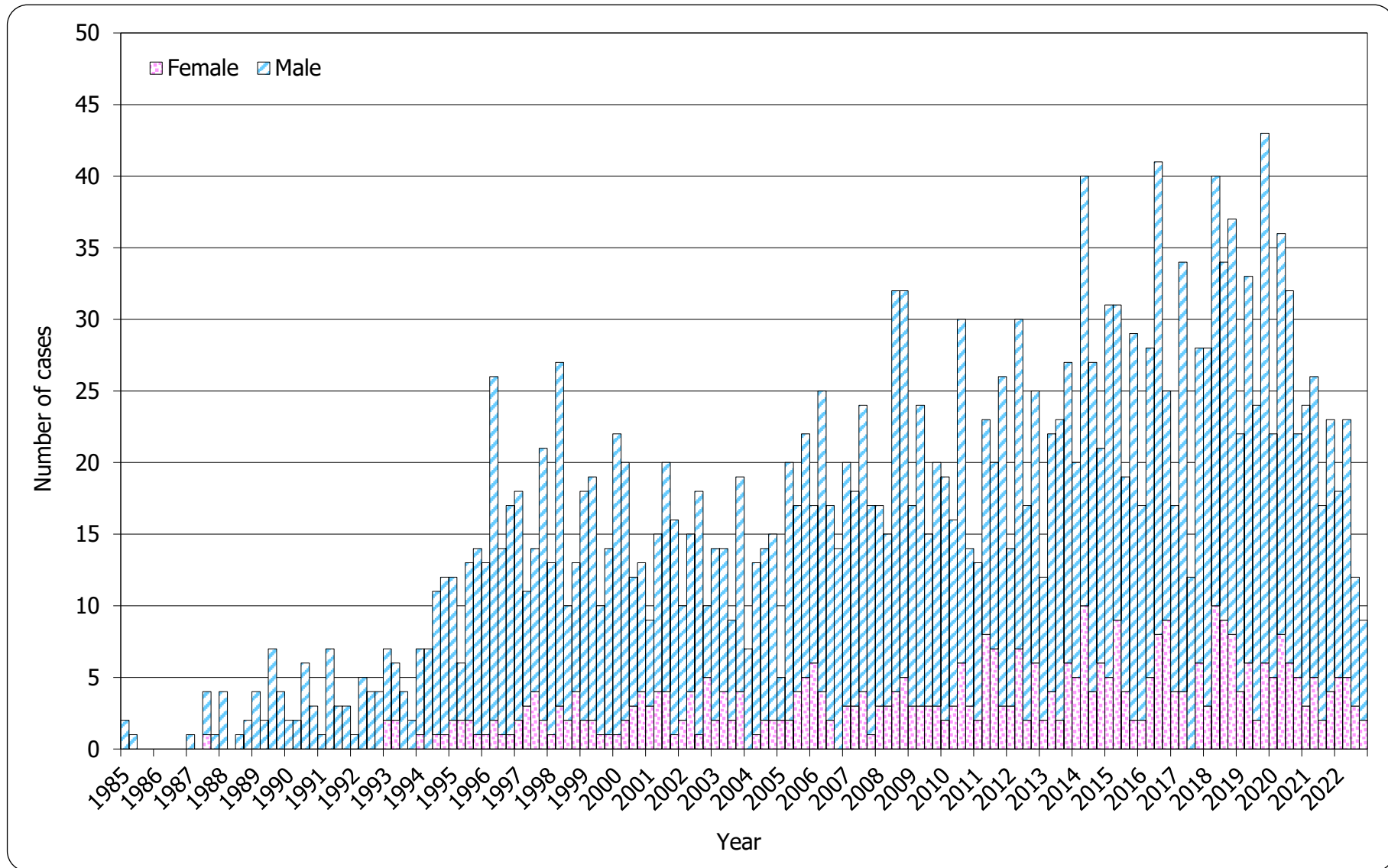
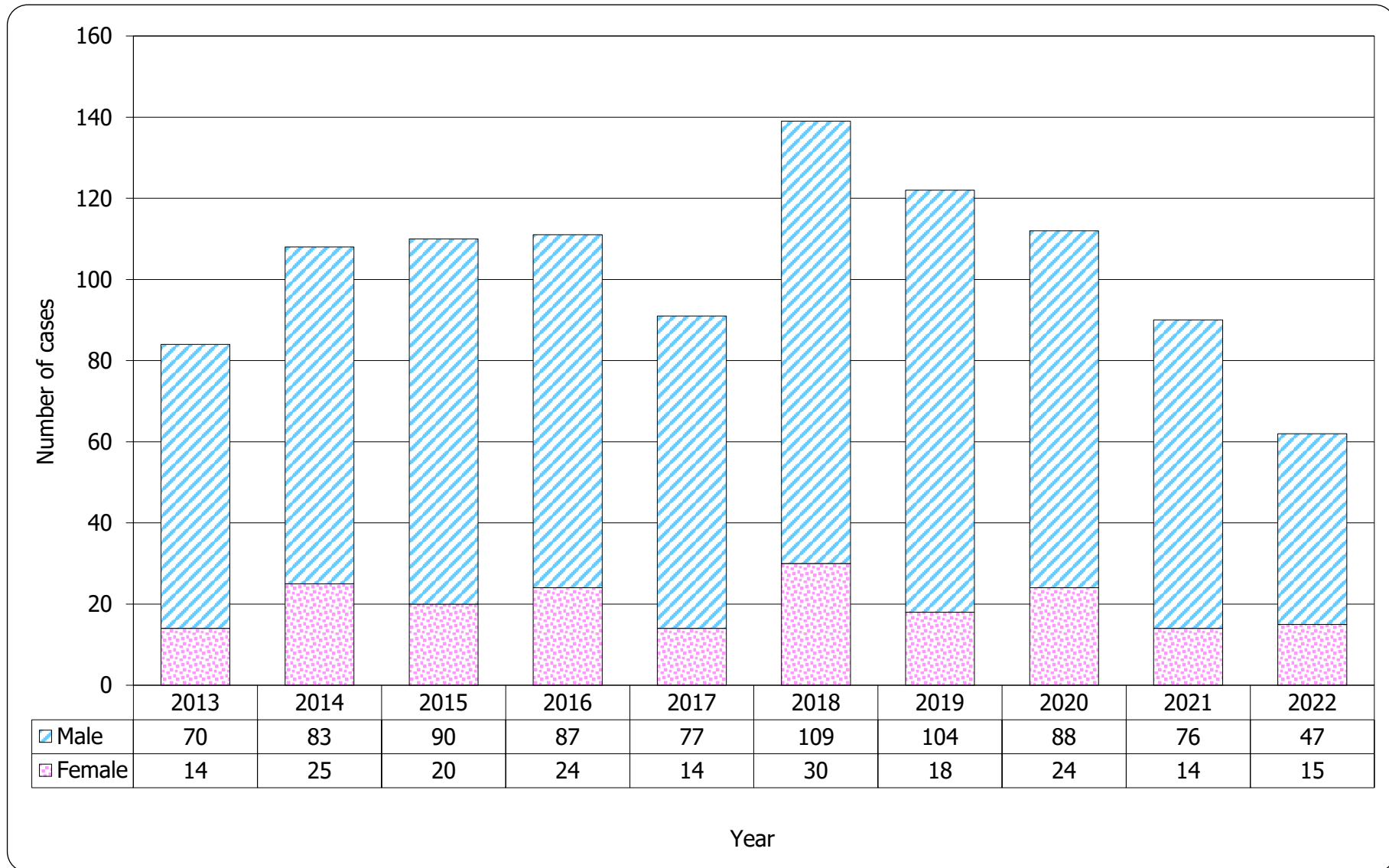


Chart 2.4 Gender distribution of reported AIDS by year



3. Ethnicity of reported HIV/AIDS

Table 3.1 Distribution of ethnicity of reported HIV

	This quarter (Oct - Dec 2022)	Last quarter (Jul - Sep 2022)	Same quarter last year (Oct - Dec 2021)	Cumulative (1984 – 2022)
Chinese	68	61	69	8,099
Non-Chinese	16	17	22	3,150
<i>Asian</i>	10	10	12	1,632
<i>White</i>	1	3	6	658
<i>Black</i>	5	2	2	274
<i>Others</i>	0	2	2	586
Unknown	18	19	19	392
Total	102	97	110	11,641

Chart 3.1 Distribution of ethnicity of reported HIV

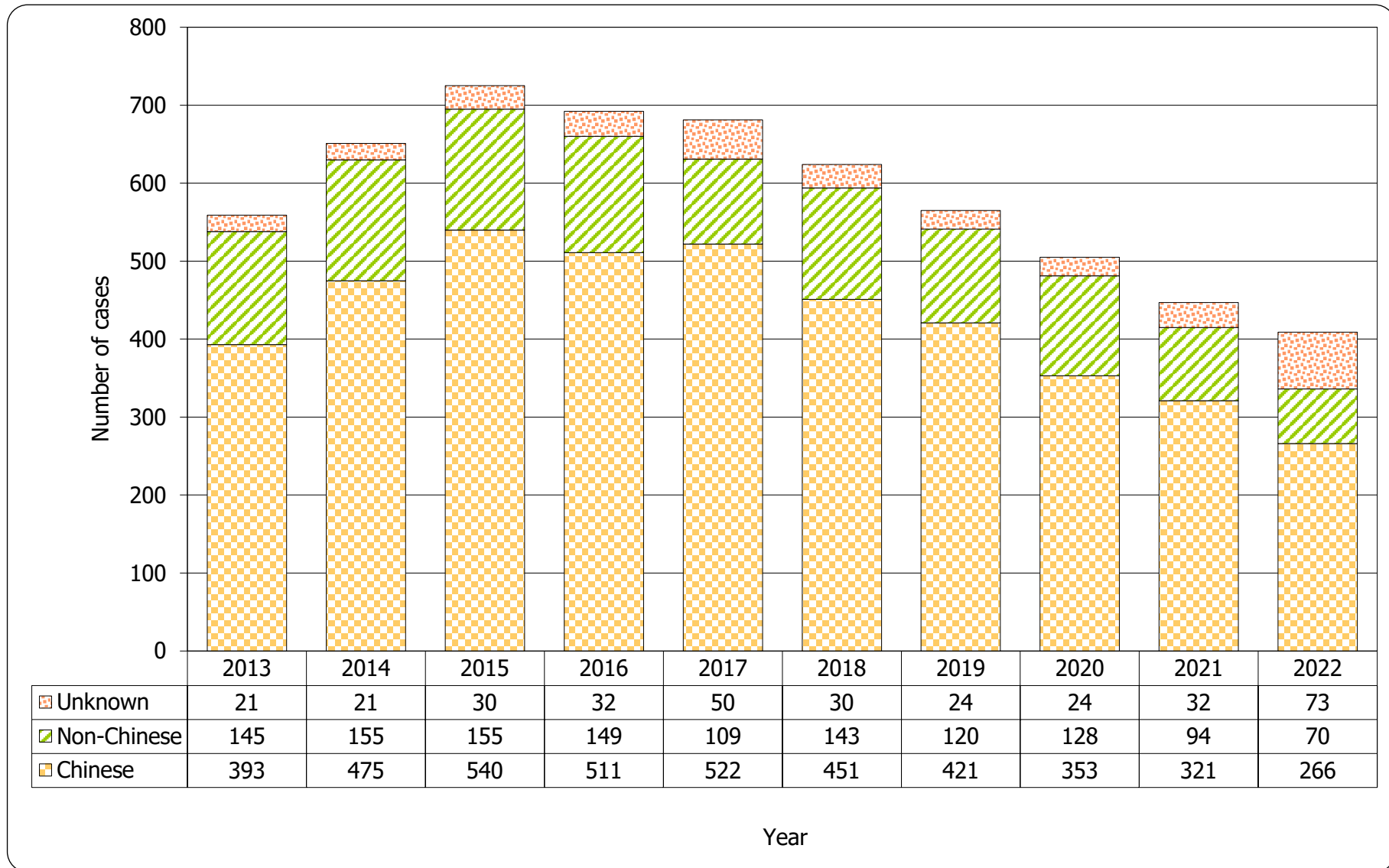
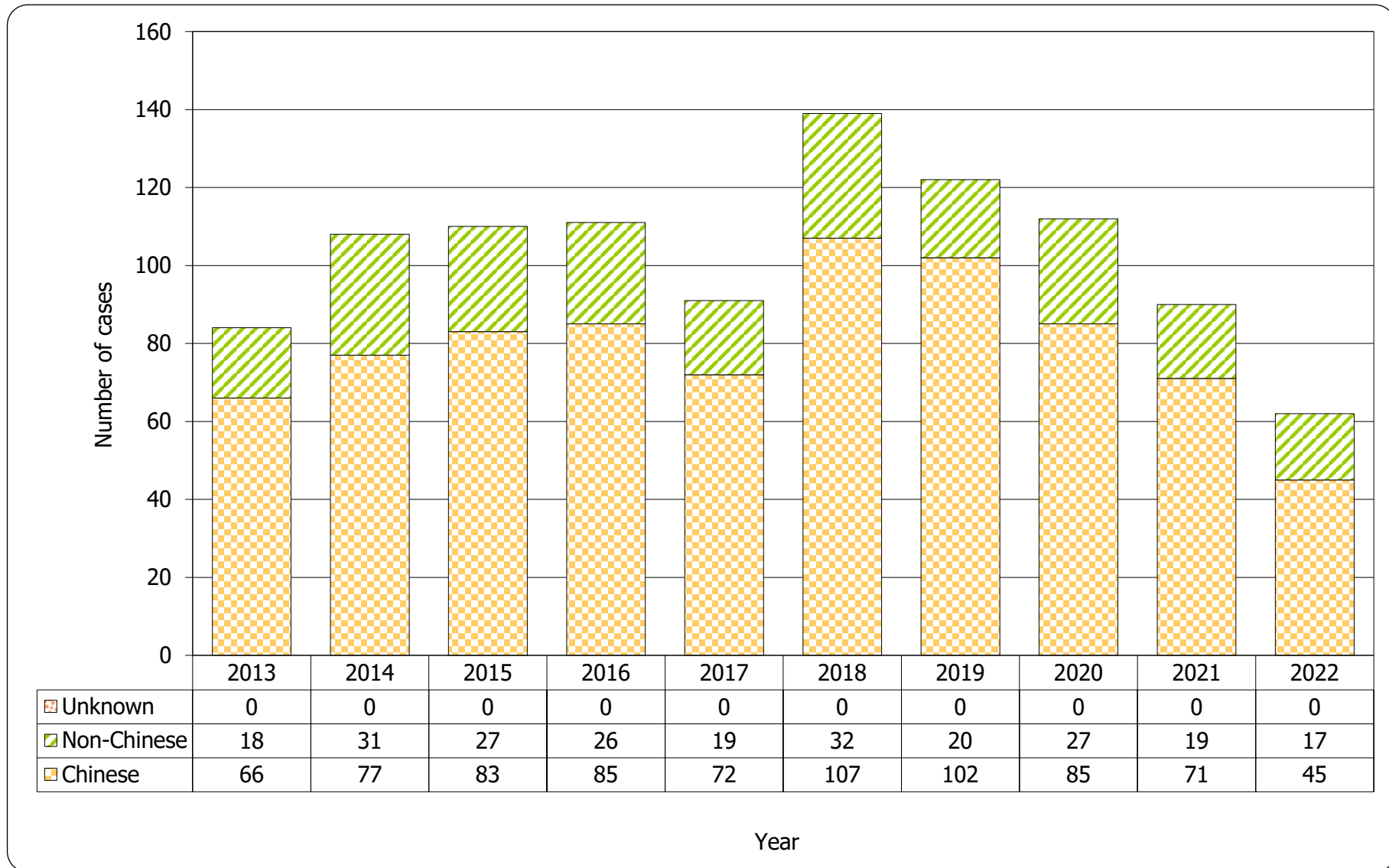


Table 3.2 Distribution of ethnicity of reported AIDS

	This quarter (Oct - Dec 2022)	Last quarter (Jul - Sep 2022)	Same quarter last year (Oct - Dec 2021)	Cumulative (1984 – 2022)
Chinese	7	9	16	1,837
Non-Chinese	2	3	7	545
<i>Asian</i>	2	3	5	387
<i>White</i>	0	0	2	104
<i>Black</i>	0	0	0	45
<i>Others</i>	0	0	0	9
Unknown	0	0	0	0
Total	9	12	23	2,382

Chart 3.2 Distribution of ethnicity of reported AIDS



4. Age distribution of reported HIV/AIDS

Table 4.1 Age distribution of reported HIV

	This quarter (Oct - Dec 2022)	Last quarter (Jul - Sep 2022)	Same quarter last year (Oct - Dec 2021)	Cumulative (1984 – 2022)
Adult	102	97	110	11,586
Child (age 13 or less)	0	0	0	55
Total	102	97	110	11,641

Chart 4.1 Age distribution of reported HIV

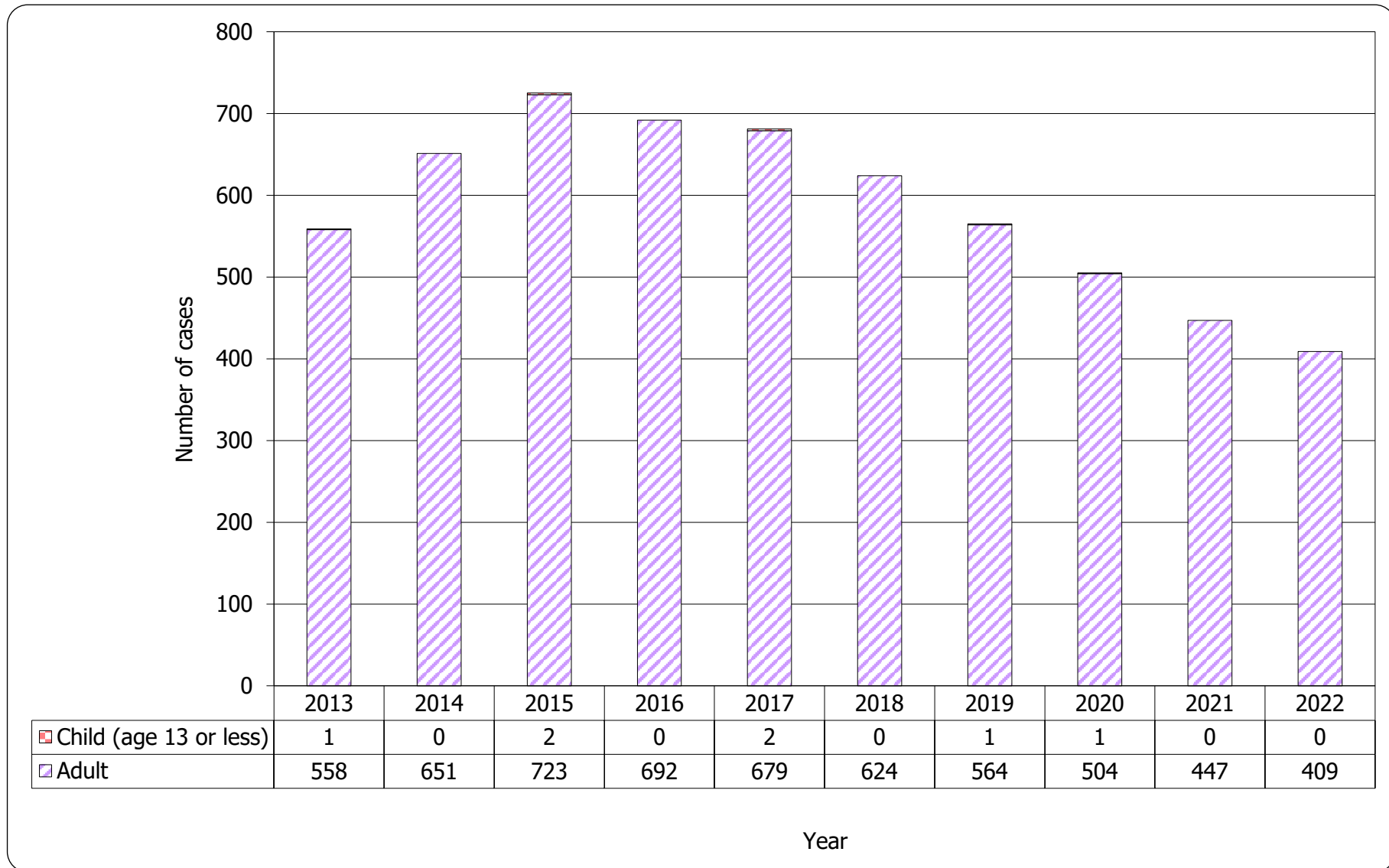


Chart 4.2 Age group & gender of total reported HIV

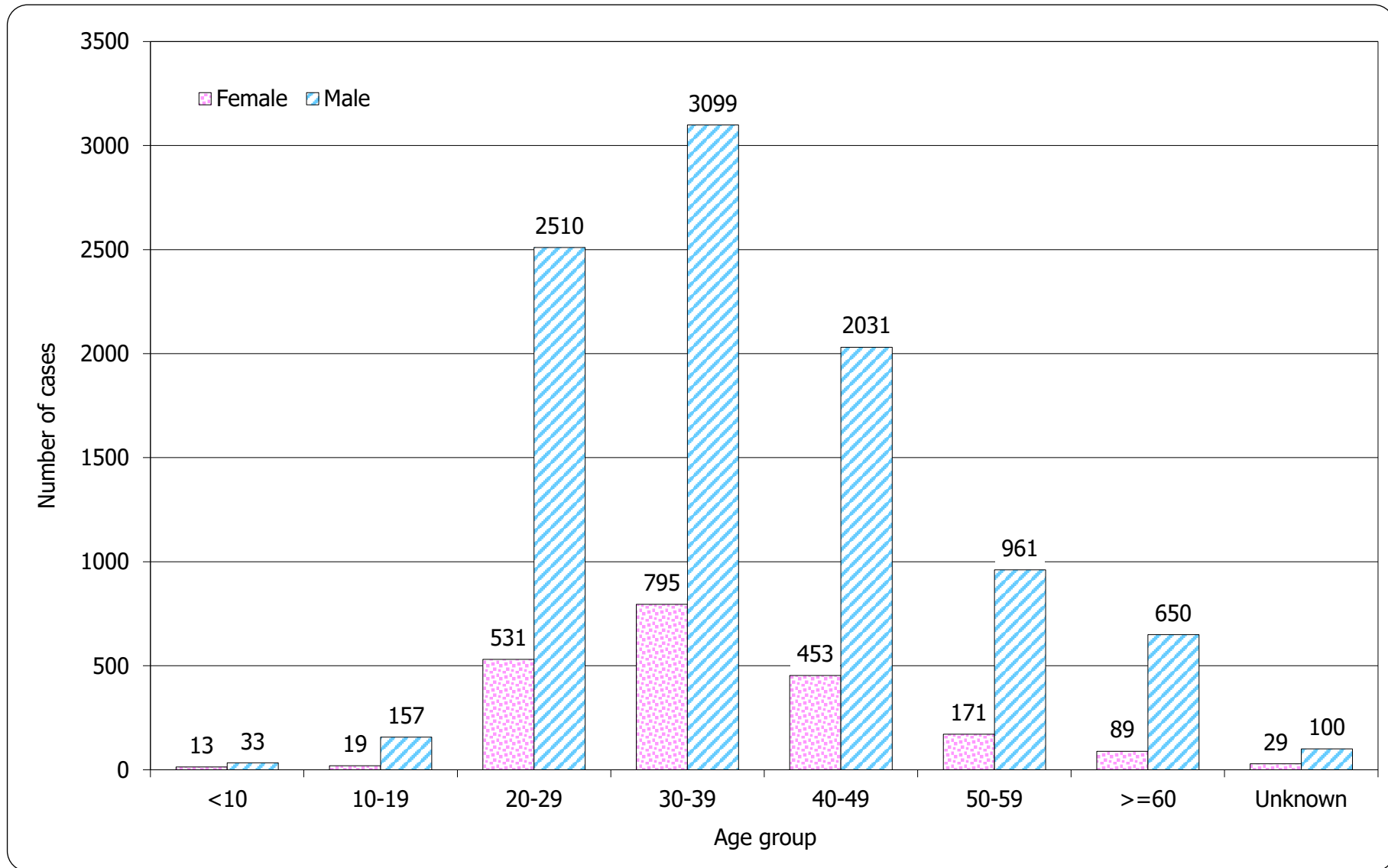


Table 4.2 Age distribution of reported AIDS

	This quarter (Oct - Dec 2022)	Last quarter (Jul - Sep 2022)	Same quarter last year (Oct - Dec 2021)	Cumulative (1984 – 2022)
Adult	9	12	23	2,368
Child (age 13 or less)	0	0	0	14
Total	9	12	23	2,382

Chart 4.3 Age distribution of reported AIDS

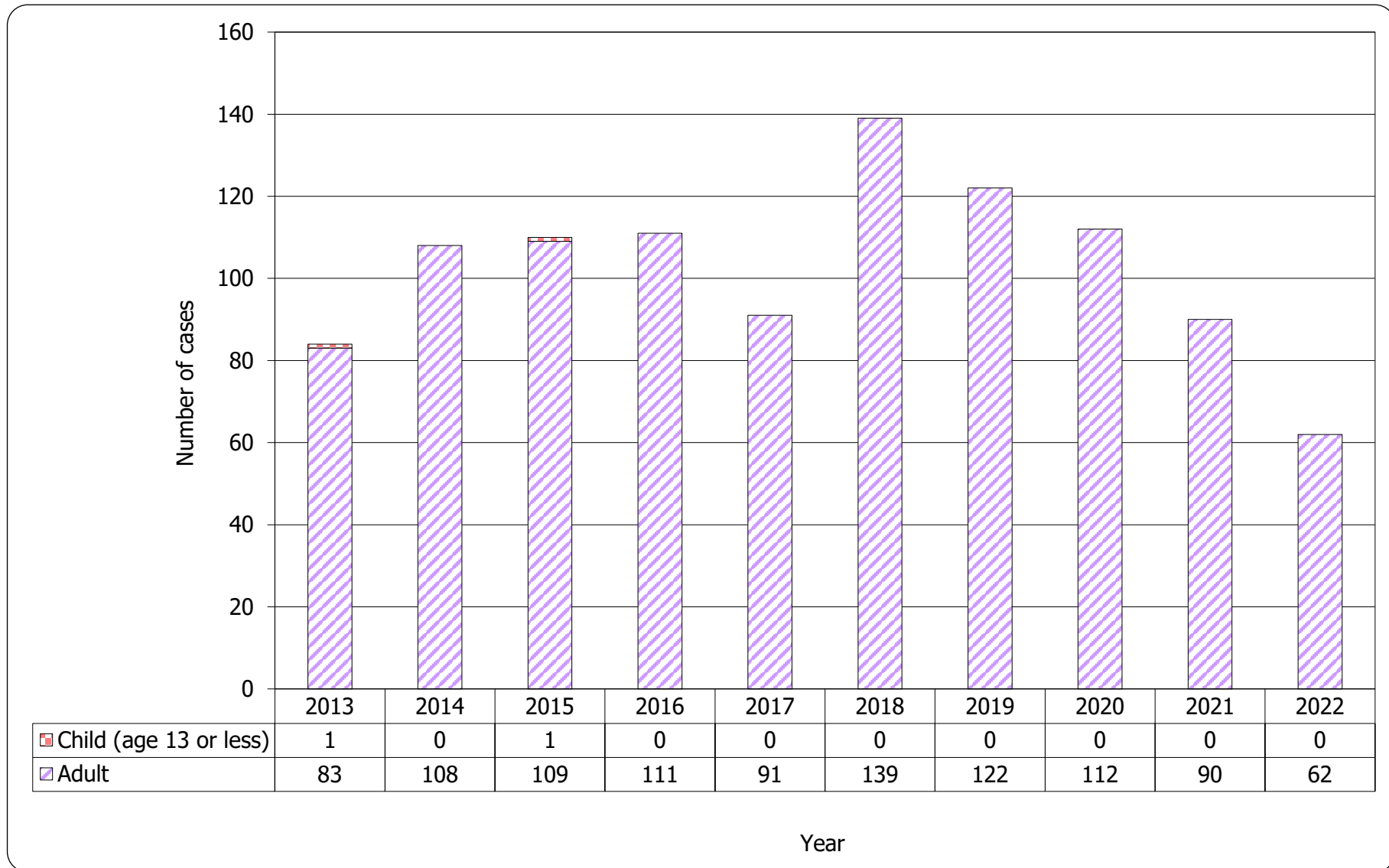
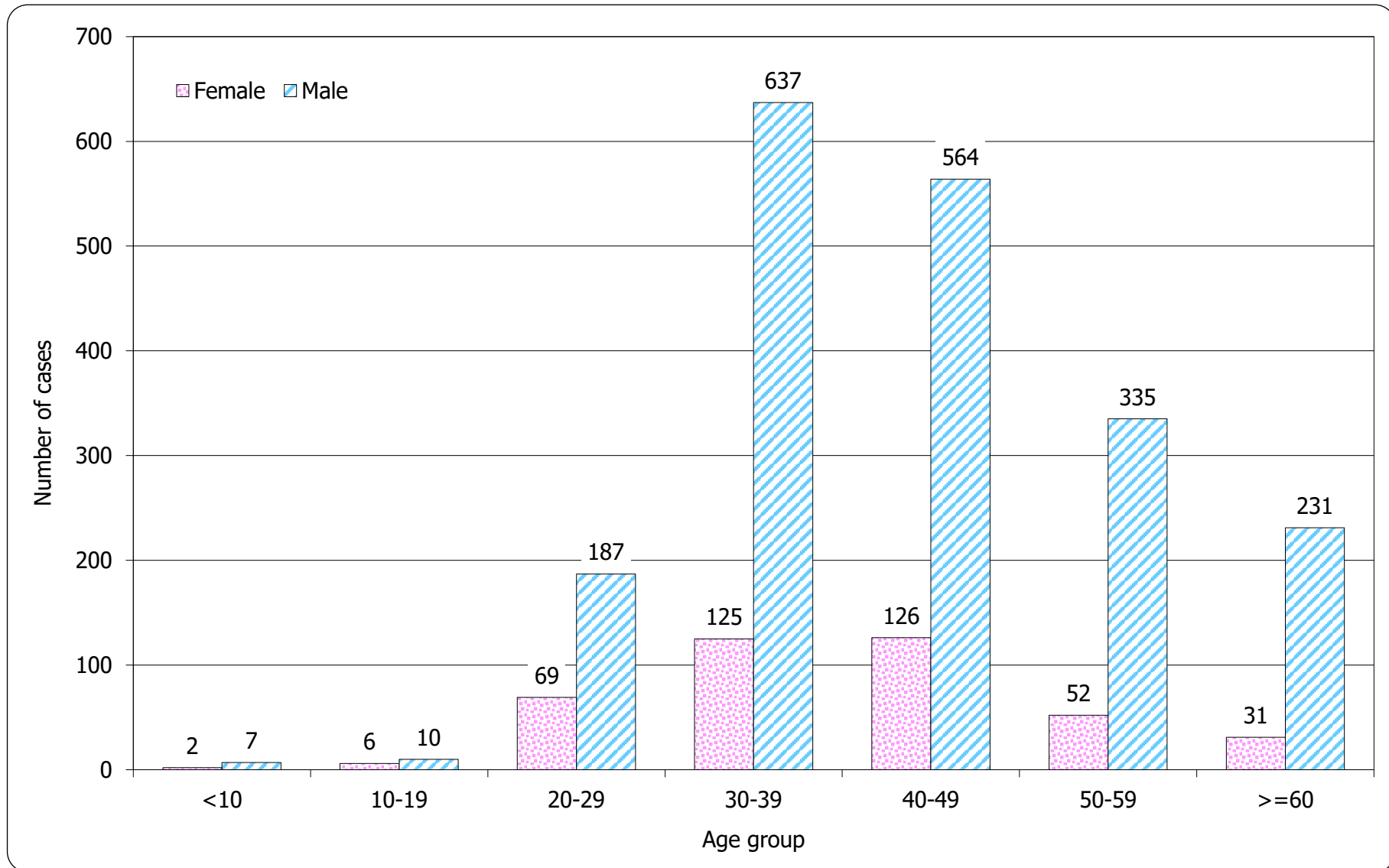


Chart 4.4 Age group & gender of total reported AIDS

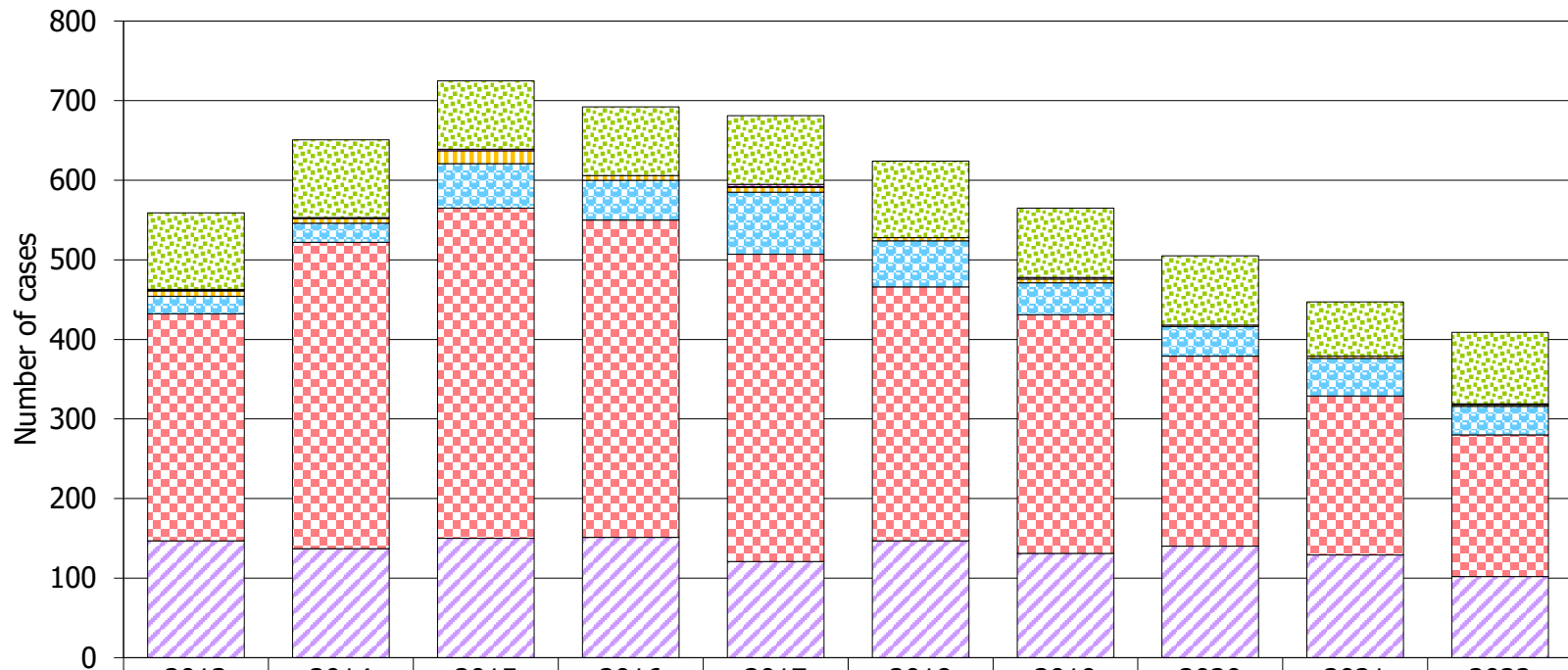


5. Exposure categories of reported HIV/AIDS

Table 5.1 Exposure categories of reported HIV

	This quarter (Oct - Dec 2022)	Last quarter (Jul - Sep 2022)	Same quarter last year (Oct - Dec 2021)	Cumulative (1984 – 2022)
Heterosexual	30	28	35	3,741
Homosexual	39	39	39	4,850
Bisexual	8	7	13	686
Injecting drug use	0	2	0	375
Blood / blood product infusion	0	0	0	86
Perinatal	0	0	0	35
Undetermined	25	21	23	1,868
Total	102	97	110	11,641

Chart 5.1 Exposure categories of reported HIV



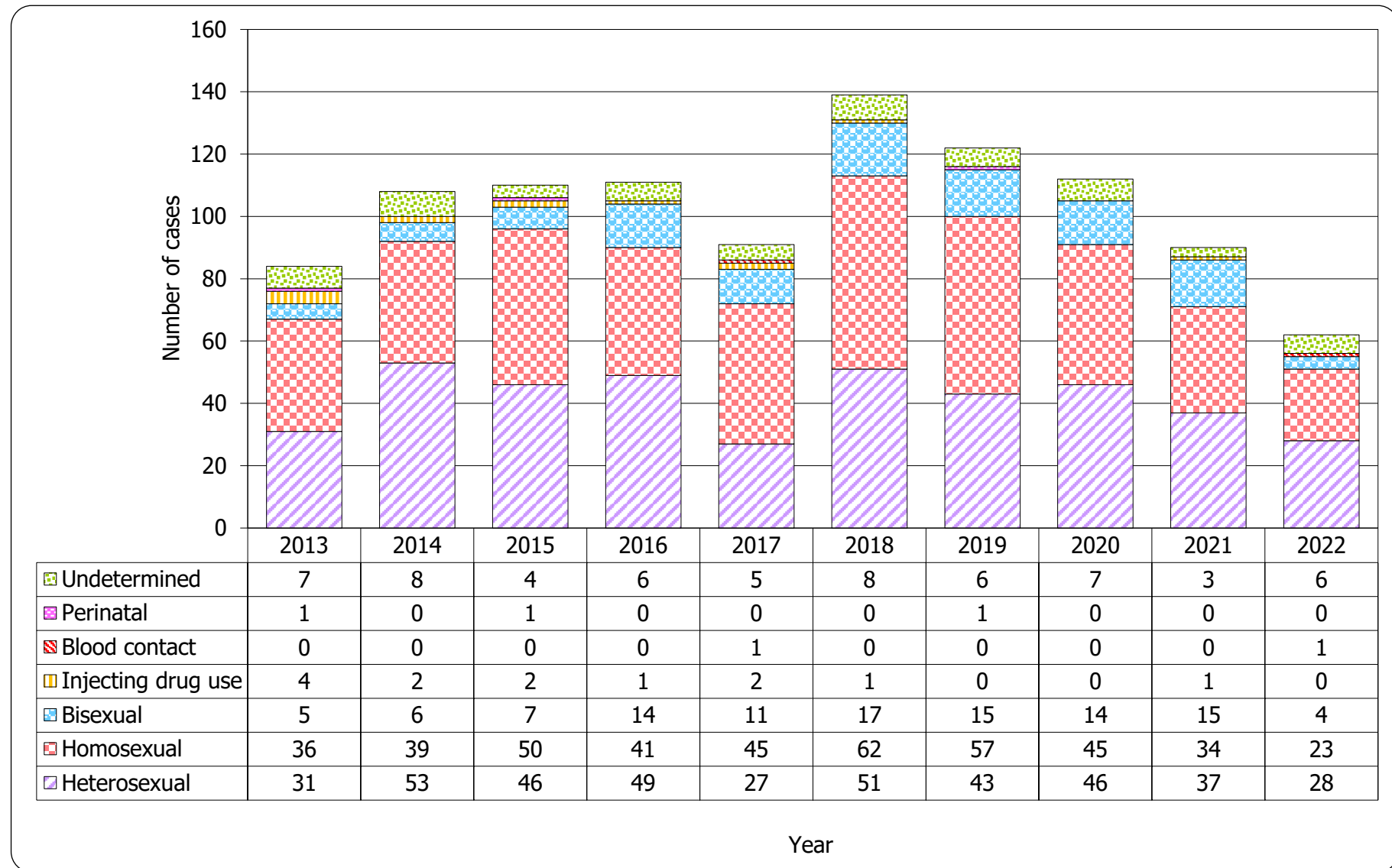
	2013	2014	2015	2016	2017	2018	2019	2020	2021	2022
Undetermined	96	98	86	86	86	96	87	87	68	90
Perinatal	1	0	2	0	3	0	2	0	0	0
Blood contact	1	1	0	0	1	0	0	0	0	1
Injecting drug use	7	6	16	6	6	4	5	2	3	2
Bisexual	22	24	56	50	78	58	40	37	47	36
Homosexual	285	385	415	399	386	319	300	239	200	178
Heterosexual	147	137	150	151	121	147	131	140	129	102

Year

Table 5.2 Exposure categories of reported AIDS

	This quarter (Oct - Dec 2022)	Last quarter (Jul - Sep 2022)	Same quarter last year (Oct - Dec 2021)	Cumulative (1984 – 2022)
Heterosexual	4	7	11	1,202
Homosexual	4	4	7	752
Bisexual	0	0	5	164
Injecting drug use	0	0	0	68
Blood / blood product infusion	0	0	0	26
Perinatal	0	0	0	11
Undetermined	1	1	0	159
Total	9	12	23	2,382

Chart 5.2 Exposure categories of reported AIDS



6. Ratio (heterosexual : homosexual / bisexual) of sexually acquired HIV infection in men

Table 6.1 Ratio of sexually acquired infection in men with reported HIV/AIDS (heterosexual : homo / bisexual) by quarter

	This quarter (Oct - Dec 2022)	Last quarter (Jul - Sep 2022)	Same quarter last year (Oct - Dec 2021)	Cumulative (1984 – 2022)
HIV	0.4 : 1	0.3 : 1	0.3 : 1	0.4 : 1
AIDS	0.8 : 1	1.0 : 1	0.6 : 1	0.9 : 1

Table 6.2 Ratio of sexually acquired infection in men with reported HIV/AIDS (heterosexual : homo / bisexual) by year

	2013	2014	2015	2016	2017	2018	2019	2020	2021	2022	1984 – 2022
HIV	0.2 : 1	0.2 : 1	0.2 : 1	0.2 : 1	0.1 : 1	0.2 : 1	0.2 : 1	0.3 : 1	0.3 : 1	0.3 : 1	0.4 : 1
AIDS	0.4 : 1	0.7 : 1	0.5 : 1	0.5 : 1	0.3 : 1	0.3 : 1	0.4 : 1	0.4 : 1	0.5 : 1	0.6 : 1	0.9 : 1

7. Injecting drug users in reported HIV/AIDS

Table 7.1 Injecting drug users in reported HIV/AIDS

	This quarter (Oct - Dec 2022)	Last quarter (Jul - Sep 2022)	Same quarter last year (Oct - Dec 2021)	Cumulative (1984 – 2022)
HIV (% of reported HIV)	0 0.0%	2 2.1%	0 0.0%	375 3.2%
AIDS (% of reported AIDS)	0 0.0%	0 0.0%	0 0.0%	68 2.9%

Table 7.2 Number of injecting drug user in reported HIV/AIDS by year

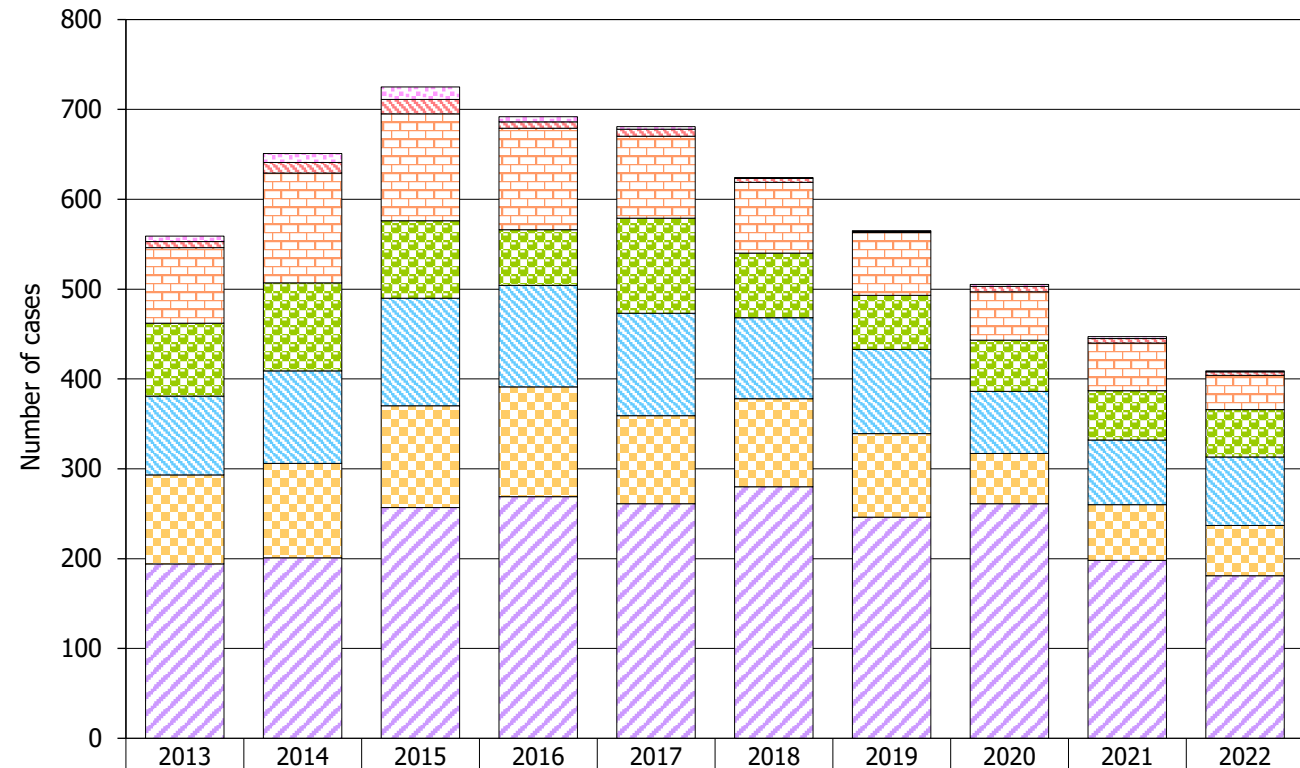
	2013	2014	2015	2016	2017	2018	2019	2020	2021	2022	1984 – 2022
HIV (% of reported HIV)	7 (1.3%)	6 (0.9%)	16 (2.2%)	6 (0.9%)	6 (0.9%)	4 (0.6%)	5 (0.9%)	2 (0.4%)	3 (0.7%)	2 (0.5%)	375 (3.2%)
AIDS (% of reported AIDS)	4 (4.8%)	2 (1.9%)	2 (1.8%)	1 (0.9%)	2 (2.2%)	1 (0.7%)	0 (0.0%)	0 (0.0%)	1 (1.1%)	0 (0.0%)	68 (2.9%)

8. Source of referral of reported HIV/AIDS

Table 8.1 Source of referral of reported HIV

	This quarter (Oct - Dec 2022)	Last quarter (Jul - Sep 2022)	Same quarter last year (Oct - Dec 2021)	Cumulative (1984 – 2022)
Public hospitals / clinics / laboratories	50	39	51	4,820
Private hospitals / clinics / laboratories	7	13	18	2,204
Social Hygiene Clinics	15	18	14	1,700
DH AIDS Unit	13	14	19	1,470
AIDS service organisations (NGOs)	16	11	7	1,131
Hong Kong Red Cross Blood Transfusion Service	1	1	1	180
Drug rehabilitation services	0	1	0	136
Total	102	97	110	11,641

Chart 8.1 Source of referral of reported HIV



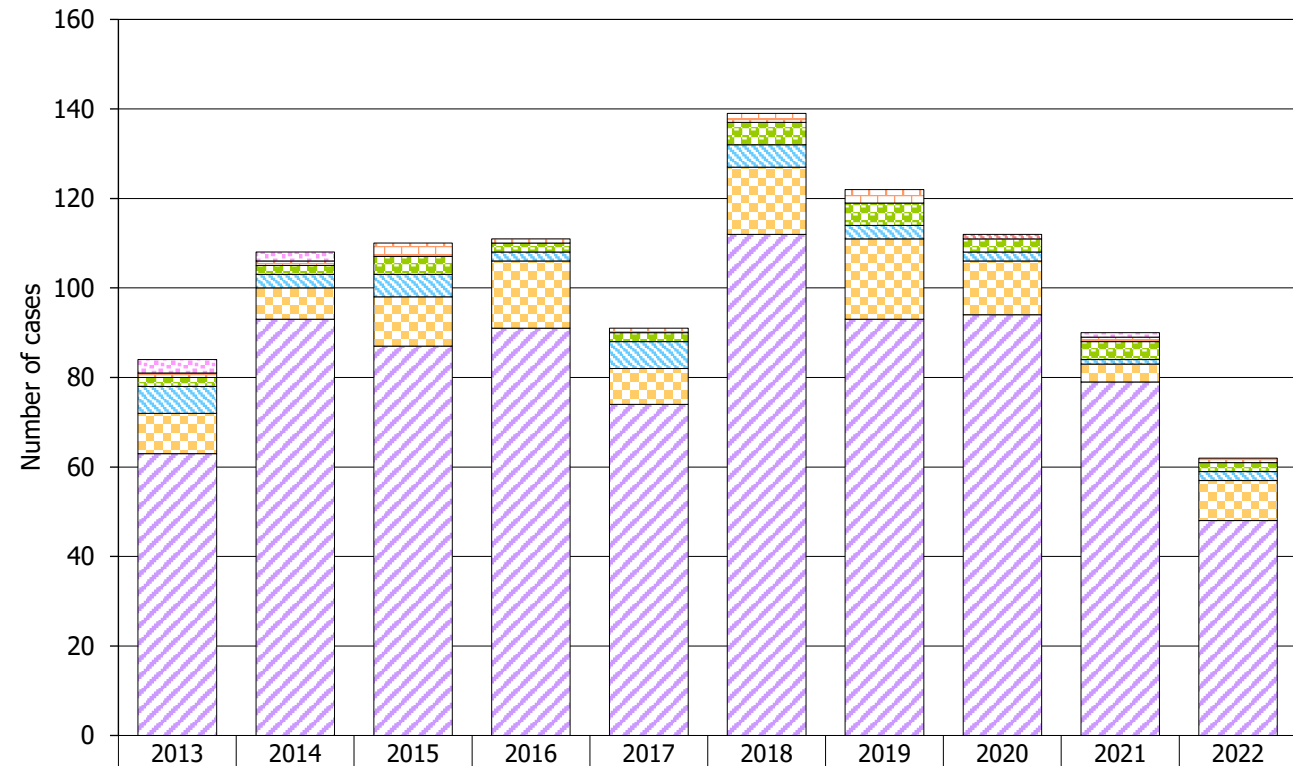
	2013	2014	2015	2016	2017	2018	2019	2020	2021	2022
Drug rehabilitation services	6	10	14	6	3	1	1	2	2	1
Hong Kong Red Cross Blood Transfusion Service	7	12	16	7	8	4	1	6	5	4
AIDS service organisations (NGOs)	84	122	119	113	91	79	70	54	53	38
DH AIDS Unit	81	98	86	62	106	72	60	57	55	53
Social Hygiene Clinics	88	103	120	113	114	90	94	69	72	76
Private hospitals / clinics / laboratories	99	105	113	122	98	98	93	56	62	56
Public hospitals / clinics / laboratories	194	201	257	269	261	280	246	261	198	181

Year

Table 8.2 Source of referral of reported AIDS

	This quarter (Oct - Dec 2022)	Last quarter (Jul - Sep 2022)	Same quarter last year (Oct - Dec 2021)	Cumulative (1984 – 2022)
Public hospitals / clinics / laboratories	9	8	18	1,844
Private hospitals / clinics / laboratories	0	1	1	300
Social Hygiene Clinics	0	2	0	81
DH AIDS Unit	0	1	2	120
AIDS service organisations (NGOs)	0	0	1	20
Hong Kong Red Cross Blood Transfusion Service	0	0	0	10
Drug rehabilitation services	0	0	1	7
Total	9	12	23	2,382

Chart 8.2 Source of referral of Reported AIDS



	2013	2014	2015	2016	2017	2018	2019	2020	2021	2022
Drug rehabilitation services	3	2	0	0	0	0	0	0	1	0
Hong Kong Red Cross Blood Transfusion Service	0	0	0	0	0	0	0	1	0	0
AIDS service organisations (NGOs)	1	1	3	1	1	2	3	0	1	1
DH AIDS Unit	2	2	4	2	2	5	5	3	4	2
Social Hygiene Clinics	6	3	5	2	6	5	3	2	1	2
Private hospitals / clinics / laboratories	9	7	11	15	8	15	18	12	4	9
Public hospitals / clinics / laboratories	63	93	87	91	74	112	93	94	79	48

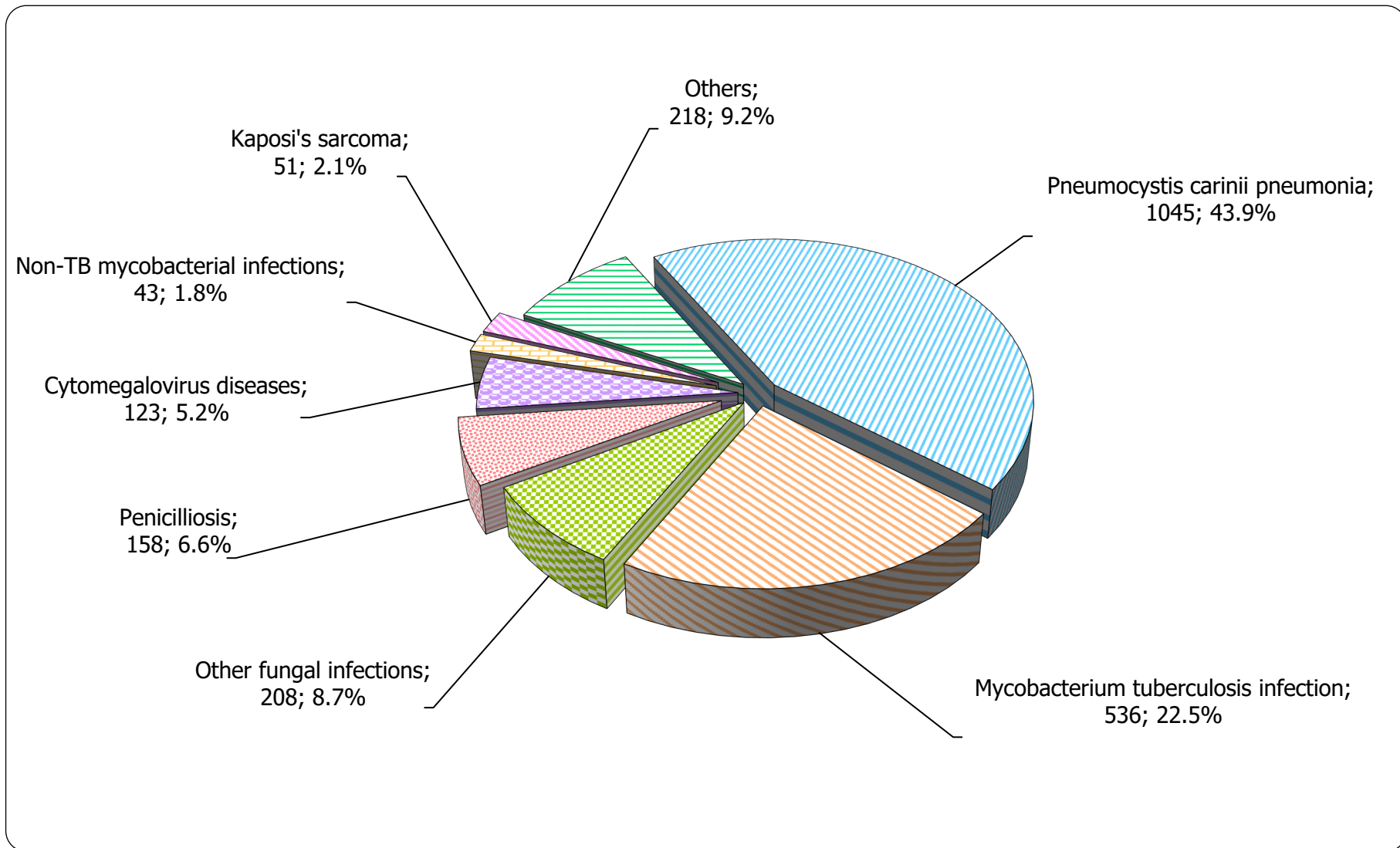
Year

9. Distribution of AIDS defining illnesses

Table 9.1 Distribution of AIDS defining illness of reported AIDS

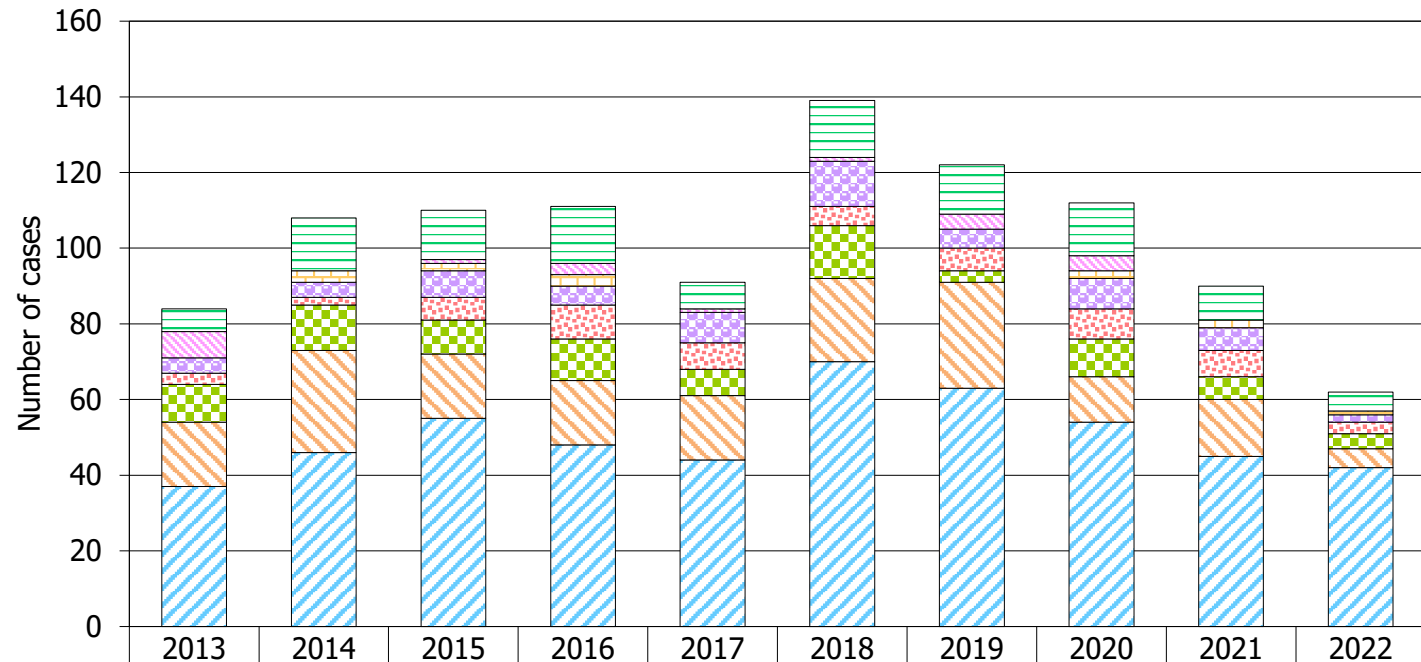
	This quarter (Oct - Dec 2022)	Last quarter (Jul - Sep 2022)	Same quarter last year (Oct - Dec 2021)	Cumulative (1984 – 2022)
<i>Pneumocystis carinii pneumonia</i>	6	5	11	1,045
<i>Mycobacterium tuberculosis</i>	1	3	4	536
Other fungal infections	0	0	1	208
Penicilliosis	0	1	3	158
Cytomegalovirus diseases	0	0	1	123
Non-TB mycobacterial infections	0	1	0	43
Kaposi's sarcoma	0	0	0	51
Others	2	2	3	218
Total	9	12	23	2,382

Chart 9.1 AIDS defining illness of total reported AIDS



Format: [ADI; Number; %]

Chart 9.2 AIDS defining illness of reported AIDS by year



	2013	2014	2015	2016	2017	2018	2019	2020	2021	2022
Others	6	14	13	15	7	15	13	14	9	5
Kaposi's sarcoma	7	0	1	3	1	1	4	4	0	0
Non-TB mycobacterial infections	0	3	2	3	0	0	0	2	2	1
Cytomegalovirus diseases	4	4	7	5	8	12	5	8	6	2
Penicilliosis	3	2	6	9	7	5	6	8	7	3
Other fungal infections	10	12	9	11	7	14	3	10	6	4
Tuberculosis	17	27	17	17	17	22	28	12	15	5
Pneumocystis carinii pneumonia	37	46	55	48	44	70	63	54	45	42

Year

10. Reported sexually transmitted infections (STIs) diagnosed in Social Hygiene Service

Table 10.1 Summary table on the reported STIs diagnosed in Social Hygiene Service

	This quarter (Oct - Dec 2022)	Last quarter (Jul - Sep 2022)	Same quarter last year (Oct - Dec 2021)	In year 2022
Syphilis				
<i>Primary</i>	22	17	17	71
<i>Secondary</i>	56	54	52	197
<i>Early latent</i>	49	70	72	212
<i>Late latent</i>	117	132	105	428
<i>Late (cardiovascular / neuro / ocular)</i>	0	3	1	5
<i>Congenital (early)</i>	0	0	1	0
<i>Congenital (late)</i>	0	0	0	0
Syphilis total	244	276	248	913

(to be cont'd)

Table 10.1 (cont'd)

	This quarter (Oct - Dec 2022)	Last quarter (Jul - Sep 2022)	Same quarter last year (Oct - Dec 2021)	In year 2022
Gonorrhoea	354	403	519	1,482
Non-gonococcal urethritis (Male)	359	694	813	2,279
Non-specific genital infection (Female)	363	449	538	1,580
Genital wart	266	305	336	1,111
Herpes genitalis	126	128	124	453
Pediculosis pubis	28	15	12	80
Trichomonas	57	62	60	192
Genital ulcer	2	1	0	3
Chancroid / Lymphogranuloma venereum	0	0	0	0
Others	89	115	195	533
Total	1,888	2,448	2,845	8,626

11. Gender distribution of reported STIs

Table 11.1 Gender distribution of selected STI reported by Social Hygiene Service

	This quarter (Oct - Dec 2022)	Last quarter (Jul - Sep 2022)	Same quarter last year (Oct - Dec 2021)	In year 2022
Primary Syphilis				
Male (M)	21	17	16	69
Female (F)	1	0	1	2
M : F	21.0 : 1	N.A.	16.0 : 1	34.5 : 1
Gonorrhoea				
Male (M)	305	348	445	1297
Female (F)	49	55	74	185
M : F	6.2 : 1	6.3 : 1	6.0 : 1	7.0 : 1
NGU / NSGI *				
Male (M)	359	694	813	2279
Female (F)	363	449	538	1580
M : F	1.0 : 1	1.5 : 1	1.5 : 1	1.4 : 1

(to be cont'd)

Table 11.1 (cont'd)

	This quarter (Oct - Dec 2022)	Last quarter (Jul - Sep 2022)	Same quarter last year (Oct - Dec 2021)	In year 2022
Genital wart				
Male (M)	206	245	254	863
Female (F)	60	60	82	248
M : F	3.4 : 1	4.1 : 1	3.1 : 1	3.5 : 1
<i>Herpes genitalis</i>				
Male (M)	77	72	82	269
Female (F)	49	56	42	184
M : F	1.6 : 1	1.3 : 1	2.0 : 1	1.5 : 1

* NGU = Non-gonococcal urethritis

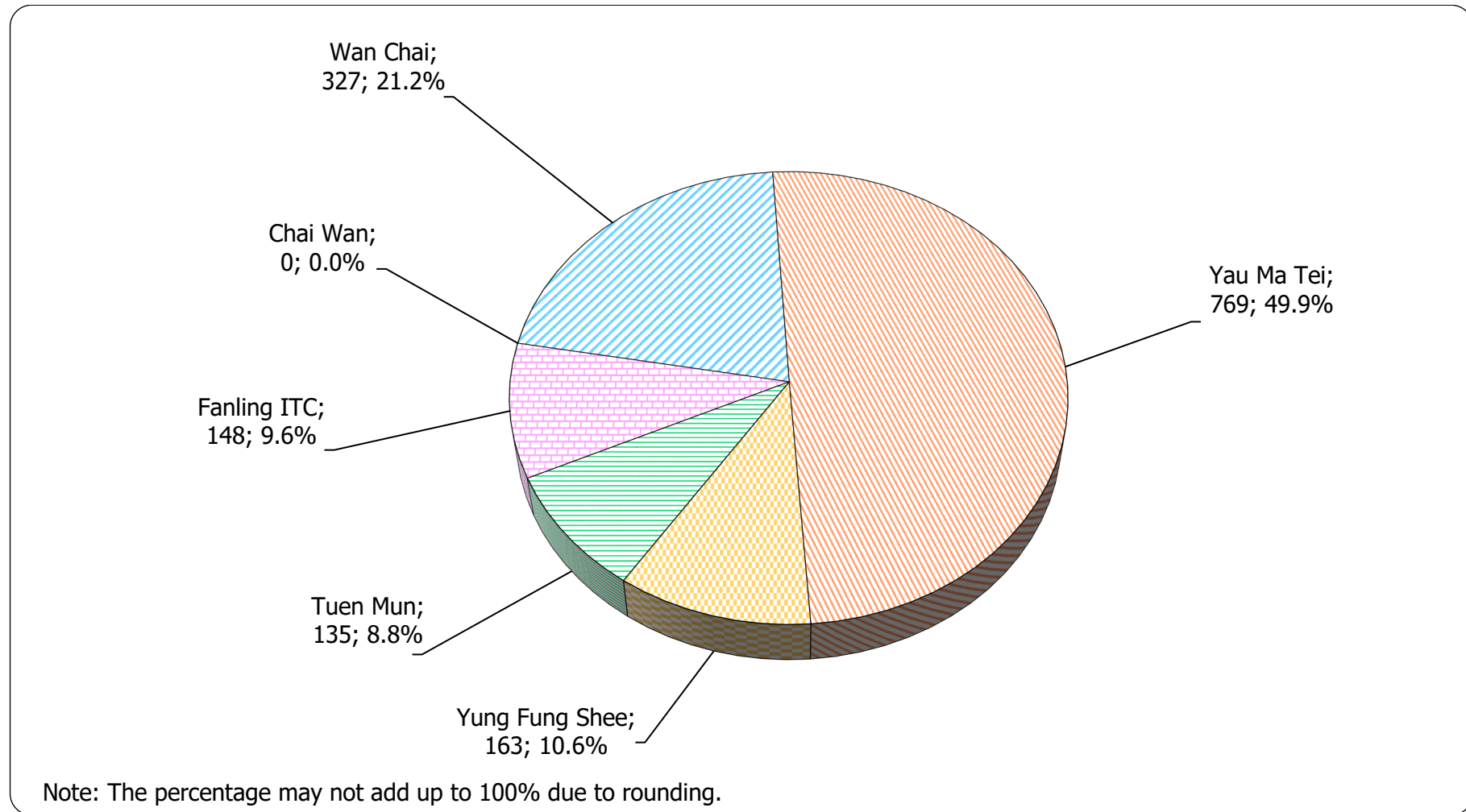
NSGI = Non-specific genital infection

Table 11.2 Gender distribution of reported STI by clinic

	This quarter (Oct - Dec 2022)		Last quarter (Jul - Sep 2022)		Same quarter last year (Oct - Dec 2021)		In year 2022	
	Male	Female	Male	Female	Male	Female	Male	Female
Chai Wan	0	0	0	0	0	0	0	0
Wan Chai	327	381	317	449	396	441	1,203	1,544
Yau Ma Tei	769	0	948	0	947	120	3,232	29
Yung Fung Shee	163	144	208	137	200	158	667	528
Tuen Mun	135	112	125	117	144	112	485	438
Fanling ITC	148	123	142	145	179	148	546	508
Total	1,542	760	1,740	848	1,866	979	6,133	3,047

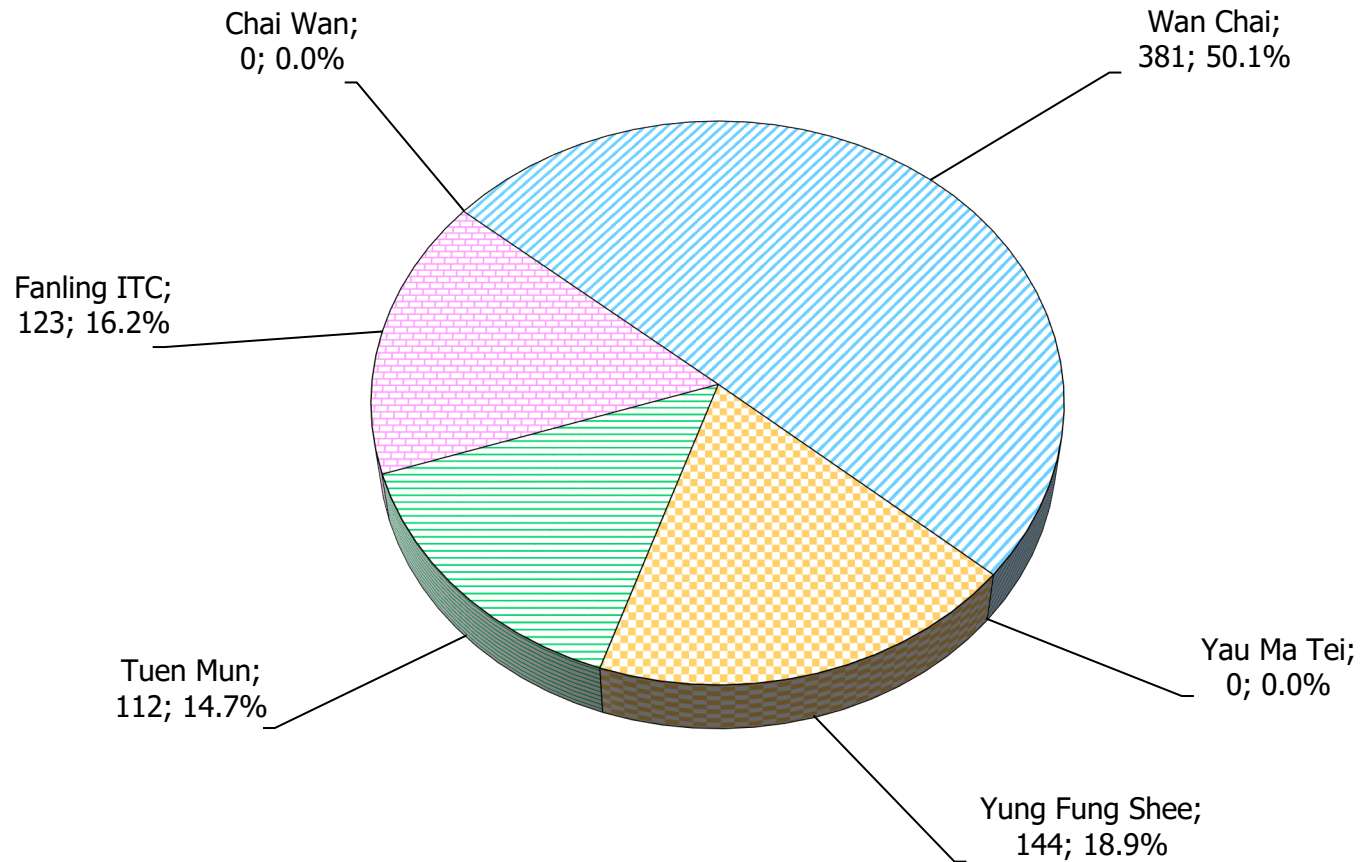
12. Clinic distribution

Chart 12.1 Number of newly report STI in Q4 2022 by clinic (male clients)



Format: [Clinic; Number; %]

Chart 12.2 Number of newly report STI in Q4 2022 by clinic (female clients)



Note: The percentage may not add up to 100% due to rounding.

Format: [Clinic; Number; %]