

## Report on Invasive Pneumococcal Disease

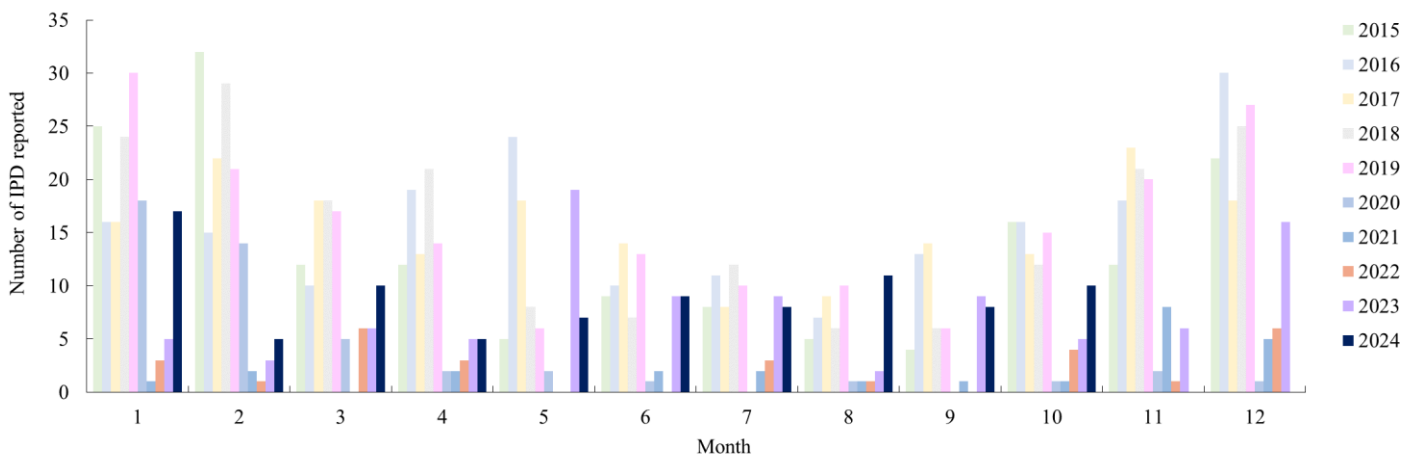
Invasive pneumococcal disease (IPD) has become a notifiable disease since 9 January 2015. Isolation of *Streptococcus pneumoniae* from a normally sterile site or detection of *Streptococcus pneumoniae* DNA from a normally sterile site of a clinically compatible case are considered as laboratory confirmation criteria for IPD.

Report on IPD is a monthly report produced by the Communicable Disease Branch of the Centre for Health Protection (CHP), the Department of Health (DH). It summarizes the surveillance findings of IPD cases reported to the CHP.

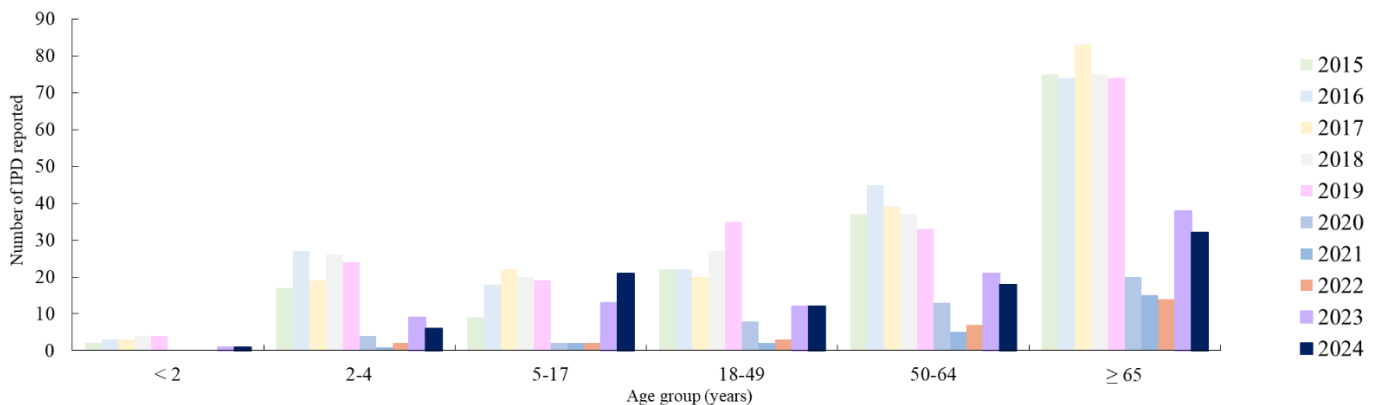
**Reporting period:** 1 - 31 October 2024 (information as of 18 November 2024)

Number of IPD reported during the reporting period: 10

**Graph 1. Number of IPD reported from January 2015 to October 2024 by month**



**Graph 2. Number of IPD reported from January 2015 to October 2024 by age group**



**Table 1. Number of IPD cases by age group and type of specimen in this reporting period**

Specimen	Age group						Total
	< 2 years	2 to 4 years	5 to 17 years	18 to 49 years	50 to 64 years	≥65 years	
Blood	0	1	3	0	1	2	7
Pleural fluid	0	1	1	0	0	0	2
Thigh abscess	0	0	0	0	1	0	1
<b>Total</b>	0	2	4	0	2	2	10

**Table 2. Number of IPD cases by age group and serotype of *Streptococcus pneumoniae* in this reporting period**

Serotype	Age Group						Total
	< 2 years	2 to 4 years	5 to 17 years	18 to 49 years	50 to 64 years	≥ 65 years	
3	0	1	1	0	0	0	2
4	0	0	0	0	0	1	1
6B	0	0	1	0	0	0	1
15A	0	0	1	0	0	1	2
15C	0	0	1	0	0	0	1
19A	0	1	0	0	0	0	1
29	0	0	0	0	1	0	1
Unknown	0	0	0	0	1	0	1
<b>Total</b>	0	2	4	0	2	2	10

**Table 3. Serotypes of *Streptococcus pneumoniae* of reported IPD cases by year (including paediatric cases aged < 18 years shown in brackets)**

Serotype	2015	2016	2017	2018	2019	2020	2021	2022	2023	2024 (up to 31/10)	
Covered by PCV 13 / 15	1	0 (0)	0 (0)	1 (0)	0 (0)	0 (0)	0 (0)	0 (0)	0 (0)	0 (0)	0 (0)
	3	72 (23)	89 (29)	88 (31)	100 (32)	87 (32)	21 (4)	5 (0)	9 (0)	41 (10)	32 (12)
	4	1 (0)	7 (0)	2 (0)	3 (0)	0 (0)	1 (0)	0 (0)	2 (0)	2 (0)	1 (0)
	5	0 (0)	0 (0)	1 (0)	1 (1)	0 (0)	0 (0)	0 (0)	0 (0)	0 (0)	0 (0)
	6A	3 (0)	1 (0)	0 (0)	0 (0)	1 (0)	0 (0)	0 (0)	1 (0)	2 (0)	0 (0)
	6B	4 (1)	1 (0)	7 (2)	1 (0)	2 (0)	0 (0)	0 (0)	0 (0)	3 (1)	3 (2)
	7F	2 (0)	0 (0)	0 (0)	1 (0)	0 (0)	0 (0)	0 (0)	0 (0)	1 (0)	0 (0)
	9V	2 (0)	2 (0)	3 (0)	0 (0)	3 (0)	0 (0)	1 (0)	0 (0)	1 (1)	1 (0)
	14	13 (0)	11 (0)	11 (2)	9 (1)	9 (0)	1 (0)	4 (0)	1 (0)	3 (0)	7 (2)
	18C	0 (0)	1 (1)	0 (0)	0 (0)	0 (0)	0 (0)	0 (0)	0 (0)	0 (0)	1 (0)
	19A	8 (1)	13 (5)	16 (4)	11 (4)	11 (5)	4 (1)	1 (0)	4 (2)	8 (2)	4 (3)
	19F	6 (0)	3 (0)	4 (0)	5 (2)	6 (0)	2 (0)	1 (0)	4 (0)	1 (0)	3 (1)
23F	6 (0)	4 (1)	2 (0)	4 (1)	6 (0)	2 (0)	0 (0)	0 (0)	3 (0)	1 (0)	
Covered by PCV 15 only	22F	4 (0)	2 (0)	2 (0)	0 (0)	6 (2)	1 (0)	2 (0)	0 (0)	1 (1)	0 (0)
	33F	0 (0)	0 (0)	0 (0)	0 (0)	0 (0)	0 (0)	0 (0)	0 (0)	1 (0)	0 (0)
<b>Serotypes covered by 23vPPV but not by PCV15</b>	18 (1)	18 (3)	12 (2)	19 (2)	17 (0)	2 (0)	1 (1)	2 (0)	3 (0)	7 (1)	
<b>Non vaccine- covered serotypes</b>	22 (2)	32 (8)	32 (2)	28 (5)	35 (5)	9 (1)	10 (2)	4 (1)	19 (7)	25 (7)	
<b>Unknown</b>	1 (0)	5 (1)	5 (1)	7 (2)	6 (3)	4 (0)	0 (0)	1 (1)	5 (1)	5 (0)	
<b>Total</b>	162 (28)	189 (48)	186 (44)	189 (50)	189 (47)	47 (6)	25 (3)	28 (4)	94 (23)	90 (28)	

PCV: pneumococcal conjugate vaccine

23vPPV: 23-valent pneumococcal polysaccharide vaccine

**Remarks:**

✧ *Figures are provisional and subject to adjustment.*

✧ *Table of pneumococcal capsular polysaccharides contained in pneumococcal vaccines for reference:*

Serotypes	1	2	3	4	5	6A	6B	7F	8	9N	9V	10A	11A	12F	14	15B	17F	18C	19A	19F	20	22F	23F	33F
13-valent PCV	●		●	●	●	●	●	●			●				●			●	●	●			●	
15-valent PCV	●		●	●	●	●	●	●			●				●			●	●	●		●	●	●
23vPPV	●	●	●	●	●		●	●	●	●	●	●	●	●	●	●	●	●	●	●	●	●	●	●

