

EV SCAN is a weekly report produced by the Enteric and Vector-borne Disease Office of the Centre for Health Protection, Department of Health. It summarises the surveillance findings of local situation of hand, foot and mouth disease (HFMD) and enterovirus 71 (EV71) infection.

HIGHLIGHTS

- The activity of hand, foot and mouth disease (HFMD) is decreasing in Hong Kong.
- The usual peak season for HFMD and EV71 infection is from May to July. From 2012 to 2014, a smaller peak also occurred from October to December.
- HFMD is a common disease in children usually caused by enteroviruses such as Coxsackie viruses and EV71. EV71 infection is of particular concern as it is more likely to be associated with severe medical complications and even death.

LATEST FIGURES IN HONG KONG

HFMD (including herpangina) institutional outbreaks

Time Period	Number reported
This week, preliminary data (Week 1, Jan 1 to Jan 5)	2
Last week (Week 53, Dec 25 to Dec 31)	2
2017 as of Jan 5	2

Laboratory confirmed EV71 infection

Time Period	Number reported
This week, preliminary data (Week 1, Jan 1 to Jan 5)	2
Last week (Week 53, Dec 25 to Dec 31)	0
2017 as of Jan 5	2
Cases with severe complication in 2017 as of Jan 5	0
Fatal cases in 2017 as of Jan 5	0

Severe paediatric enterovirus infection (other than EV71 and poliovirus)

Time Period	Number reported
This week, preliminary data (Week 1, Jan 1 to Jan 5)	0
Last week (Week 53, Dec 25 to Dec 31)	0
2017 as of Jan 5	0
Fatal cases in 2017 as of Jan 5	0

ANNUAL NUMBER OF HFMD OUTBREAKS AND EV71 INFECTION IN HONG KONG

Year	Number of HFMD (including herpangina) institutional outbreaks	Persons affected in HFMD (including herpangina) institutional outbreaks	Number of EV71 cases	Number of EV71 deaths
2011	253	1370	68	1
2012	382	2216	59	0
2013	779	5151	12	0
2014	346	2087	68	1
2015	691	4194	56	0
2016	874	4913	38	0

Figure 1. No. of EV71 cases by week since 2014

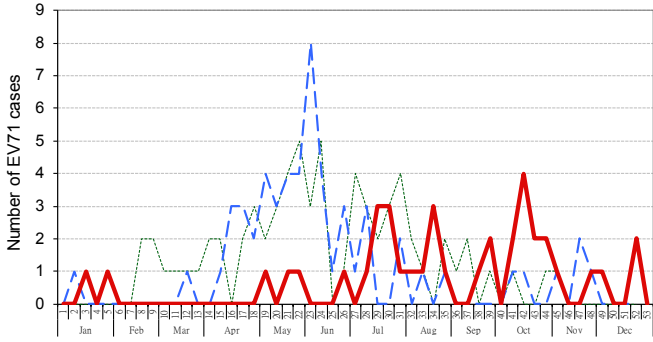


Figure 2. No. of HFMD institutional outbreaks by week since 2014

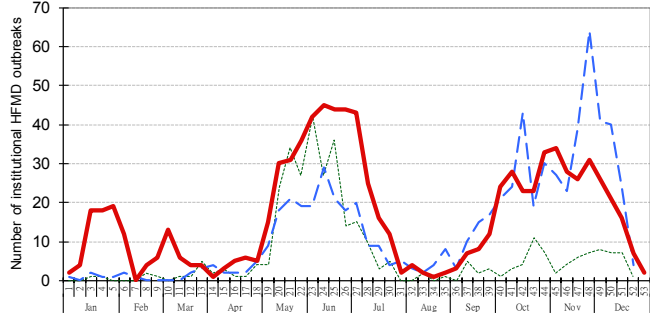


Figure 3. No. of hospital admission episodes of HFMD by week since 2014

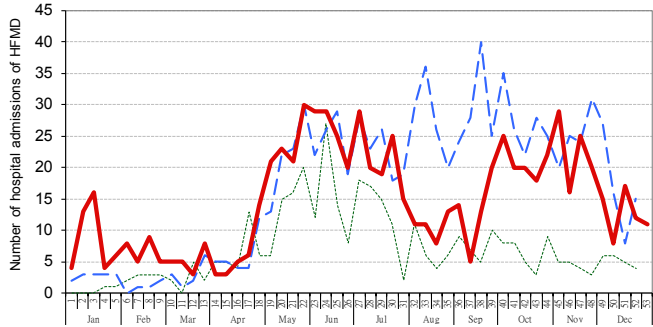


Figure 4. Accident & Emergency Departments surveillance of HFMD syndrome group since 2014

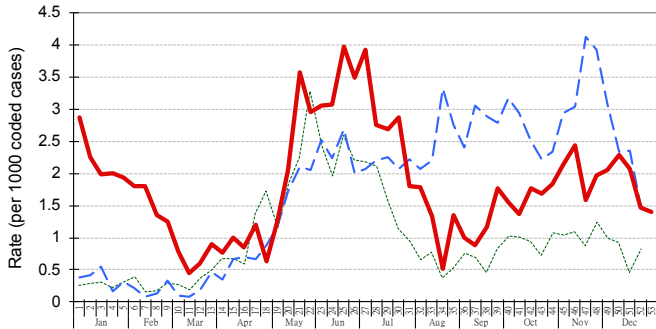


Figure 5. HFMD sentinel surveillance based at child care centres/kindergartens by week since 2014

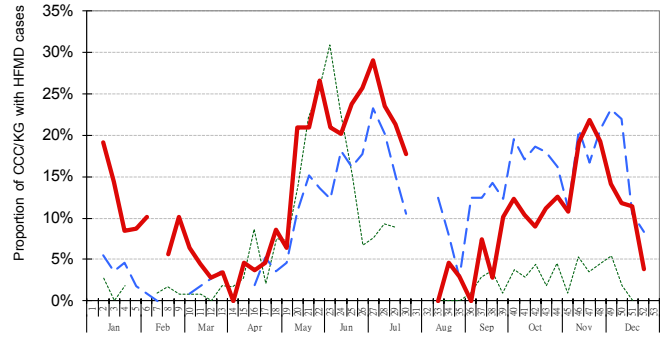


Figure 6. HFMD sentinel surveillance among general practitioners by week since 2014

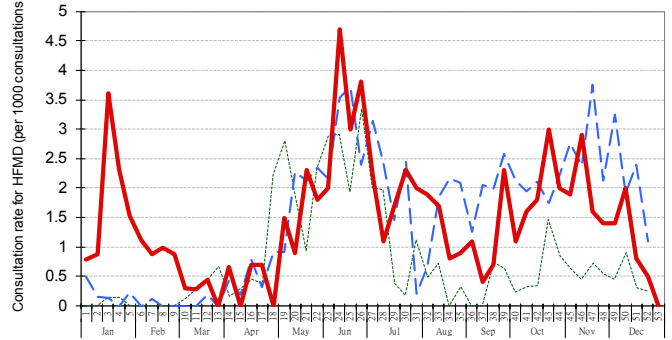
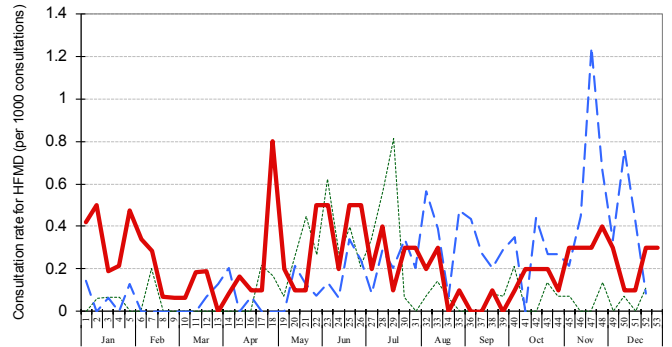


Figure 7. HFMD sentinel surveillance among general outpatient clinics by week since 2014



Legend: ----- 2014 - - - - 2015 - - - - 2016